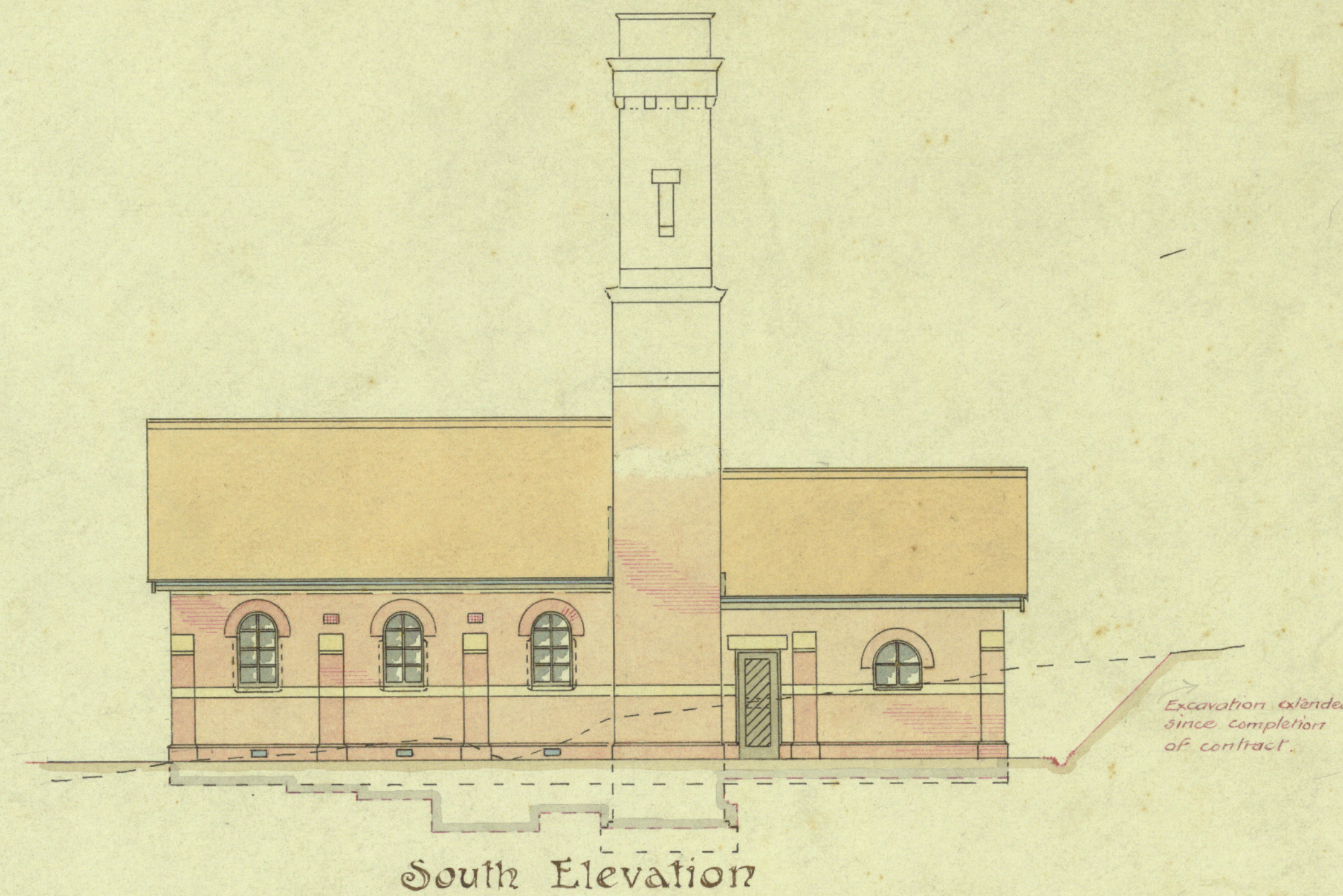
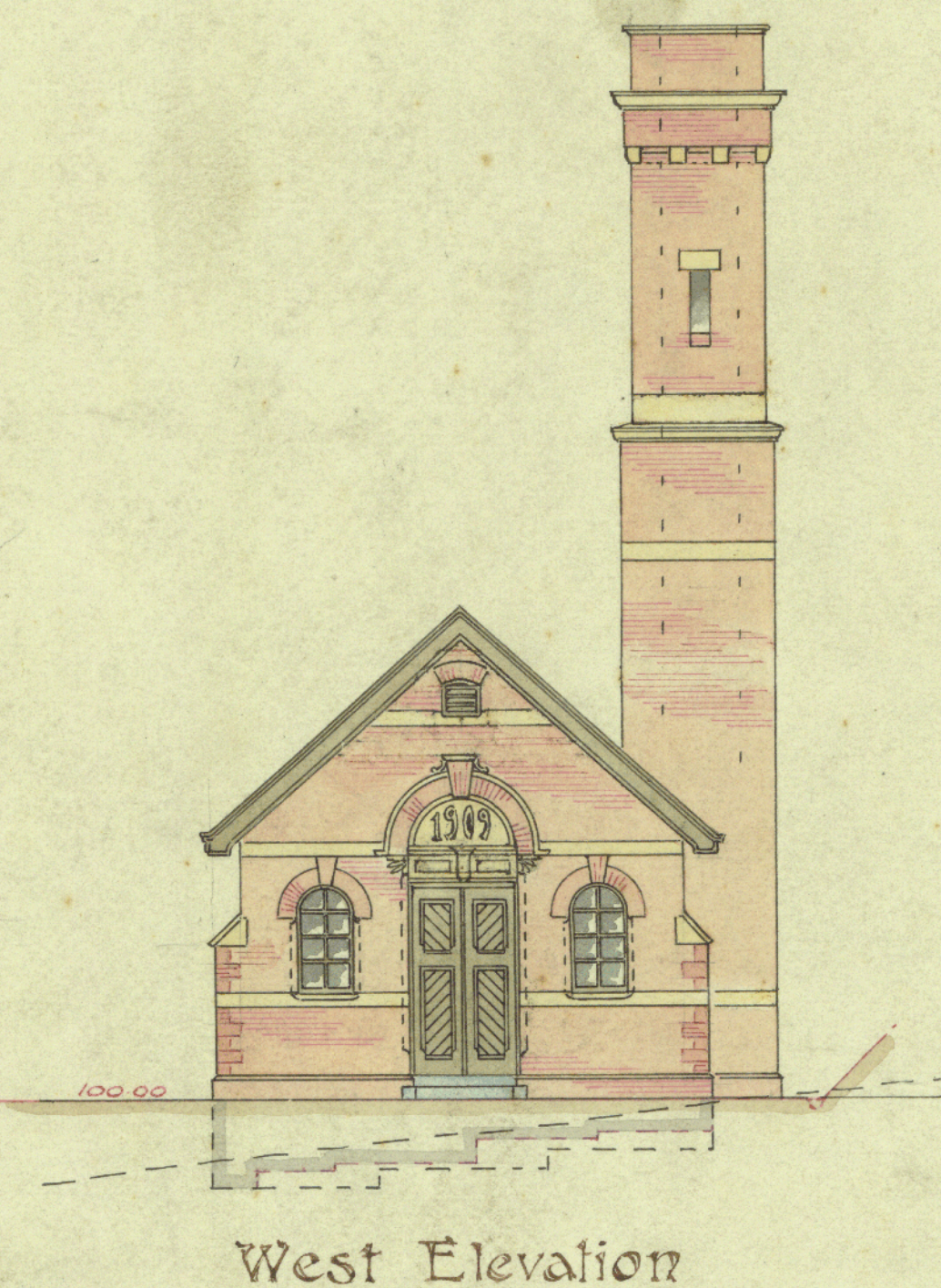
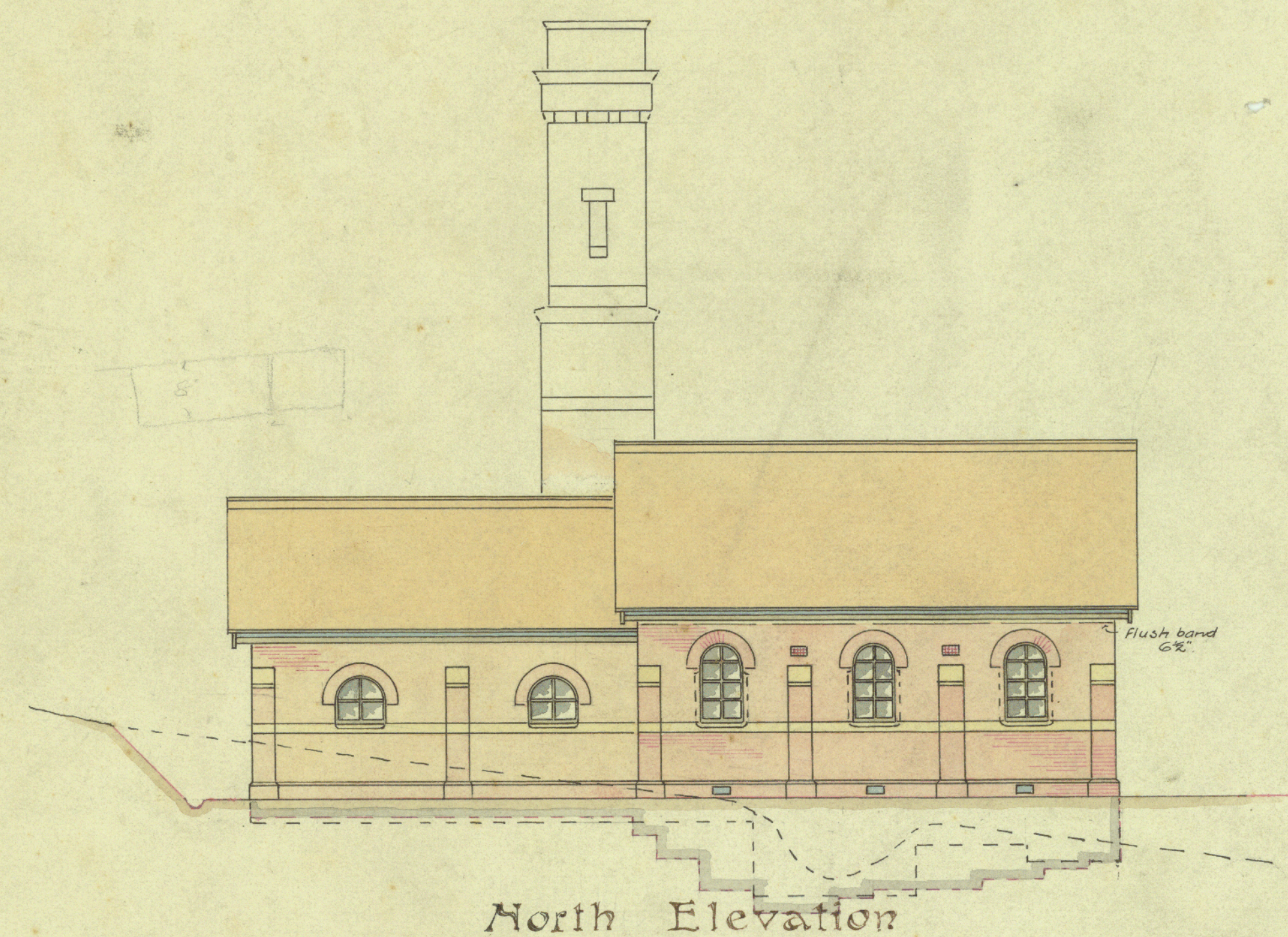
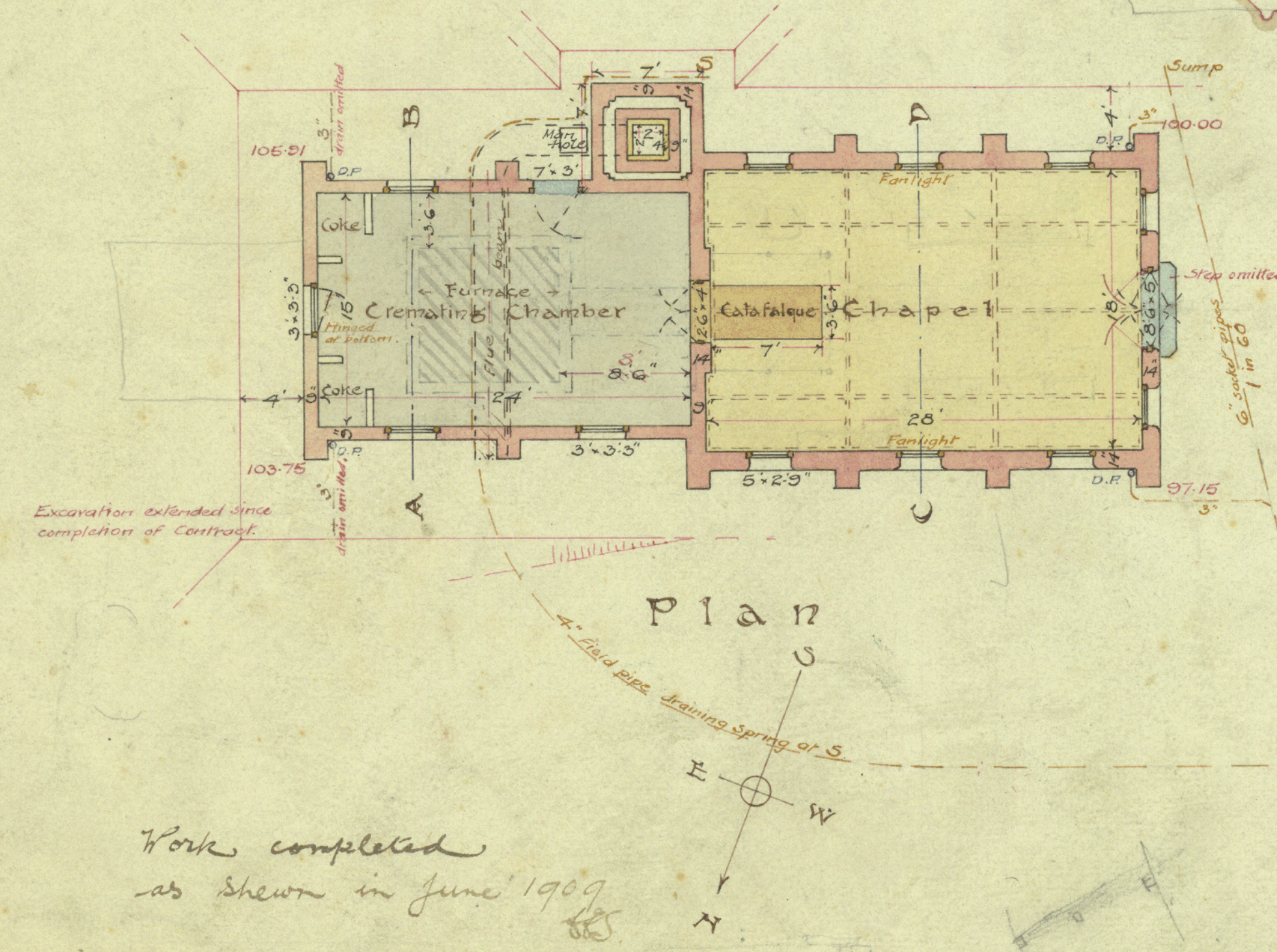
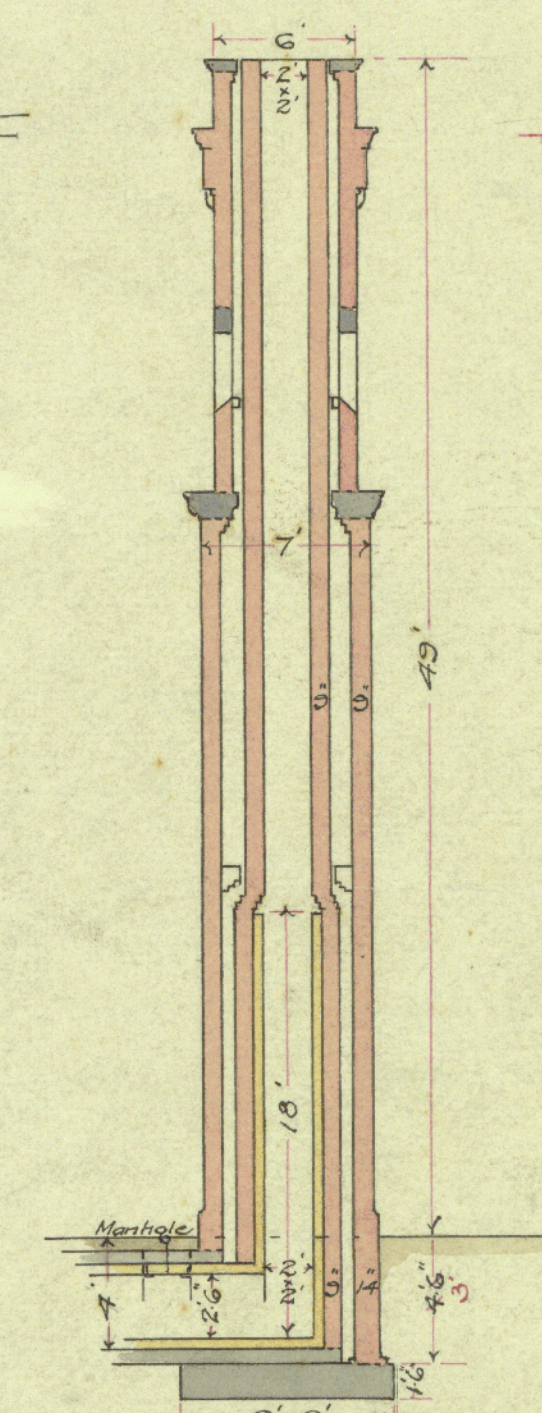
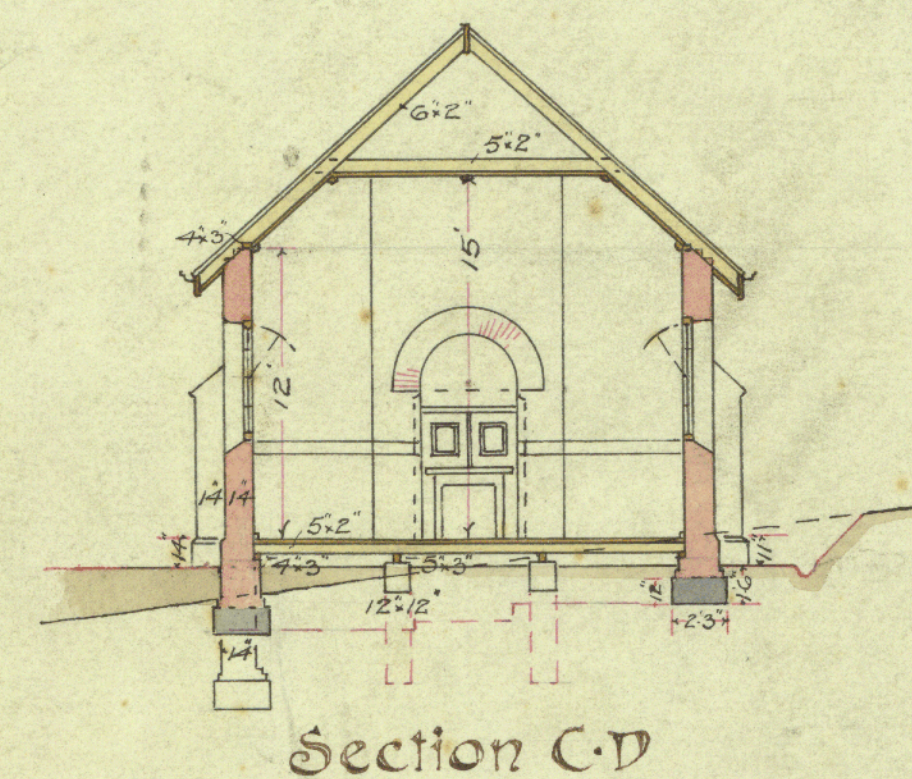
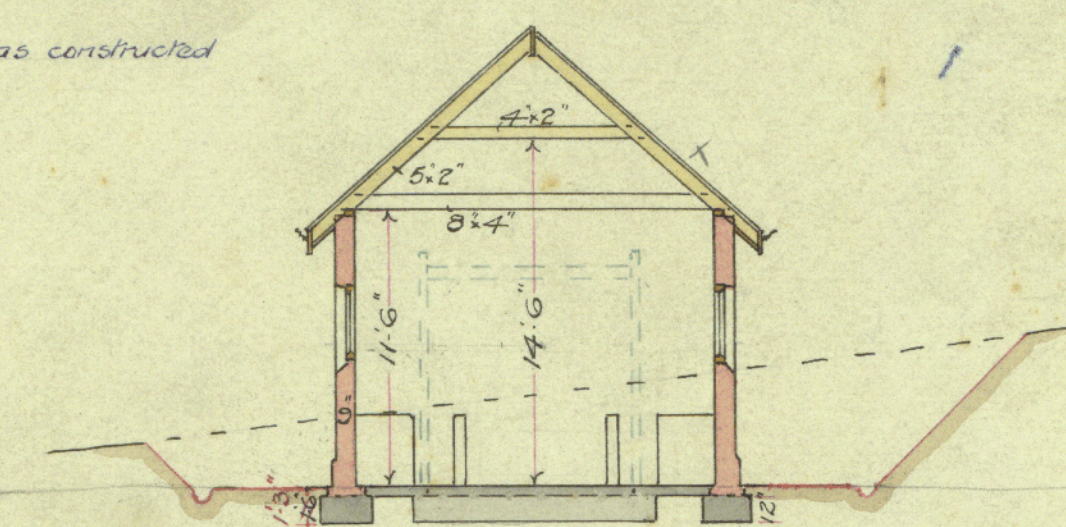


PROPOSED CREMATORIUM KARORI CEMETERY



Scale
3 Feet to 1 Inch



Work completed
as shown in June 1909

This is the drawing referred to in the Contract of
the 16th day of February 1909 made between
James Hickey and the Wellington City Corporation for
the erection of a Crematorium at Karori Cemetery

J. Hickey
Contractor
No. 1
Jan

476 406