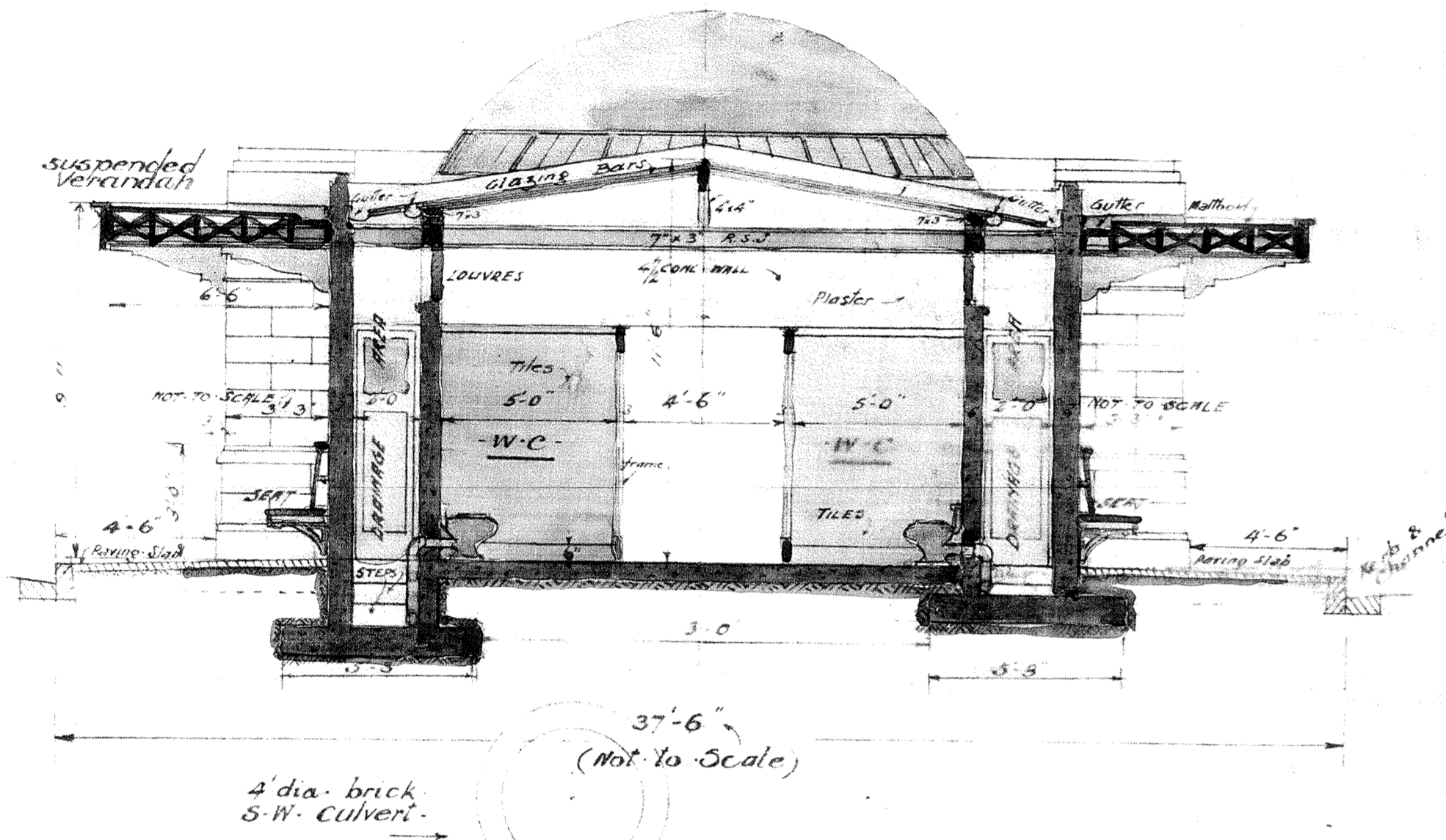


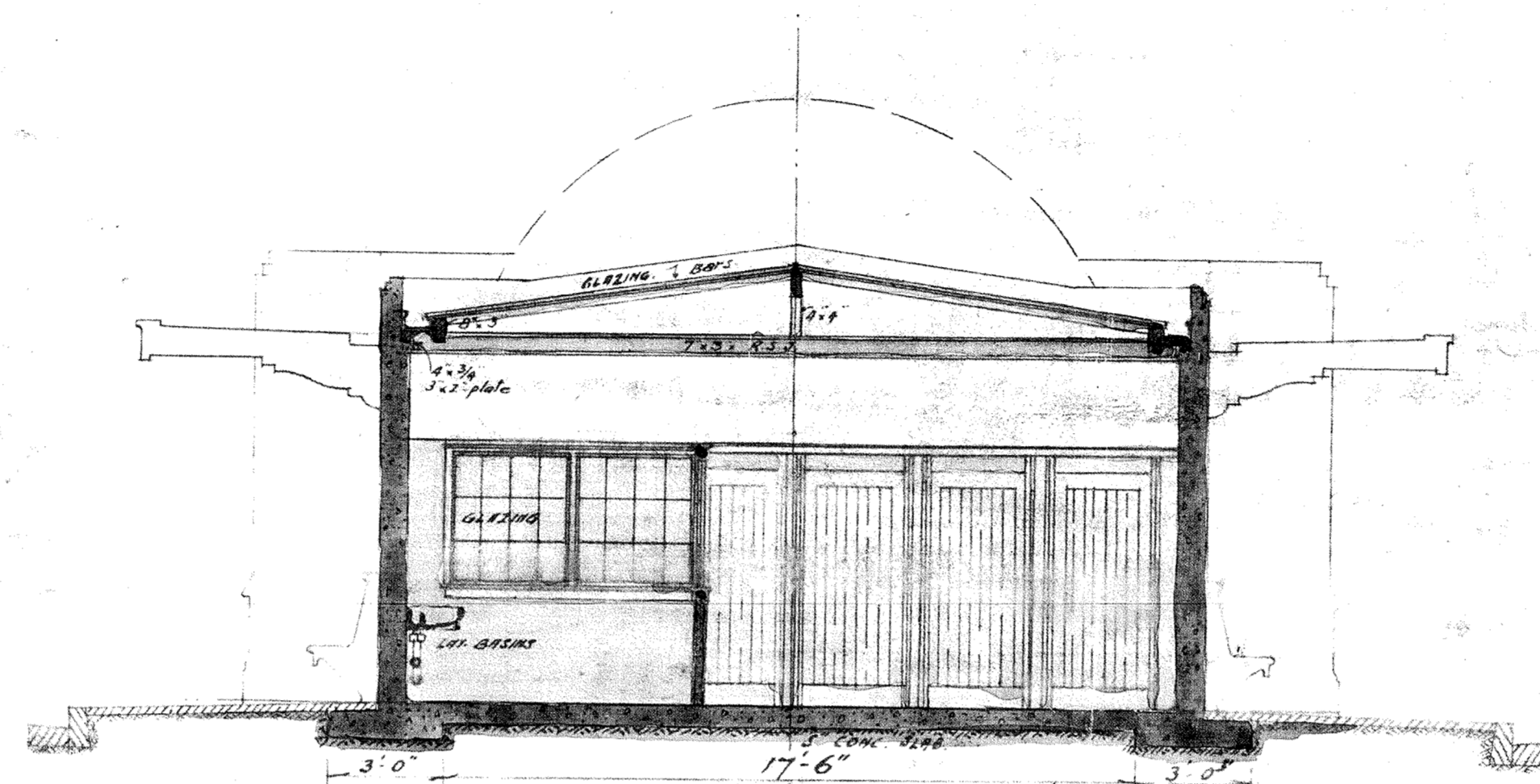
ORIGINAL
NO. 2 ELEVATIONS
CROSS SECTIONS

DRAWING NO 2
CONTRACT NO

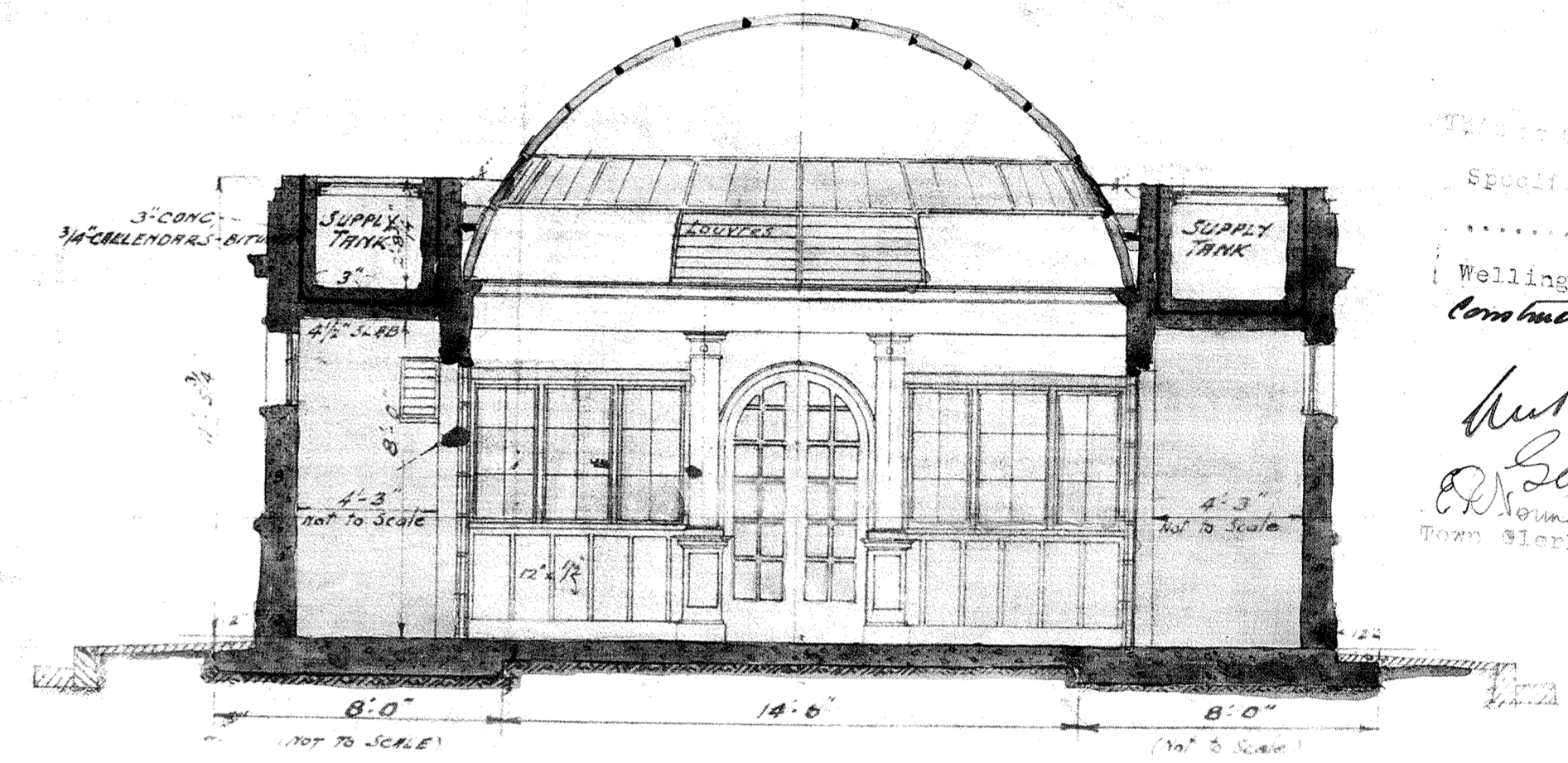
SCALE 1/4 IN = ONE FT



— SECTION AA —

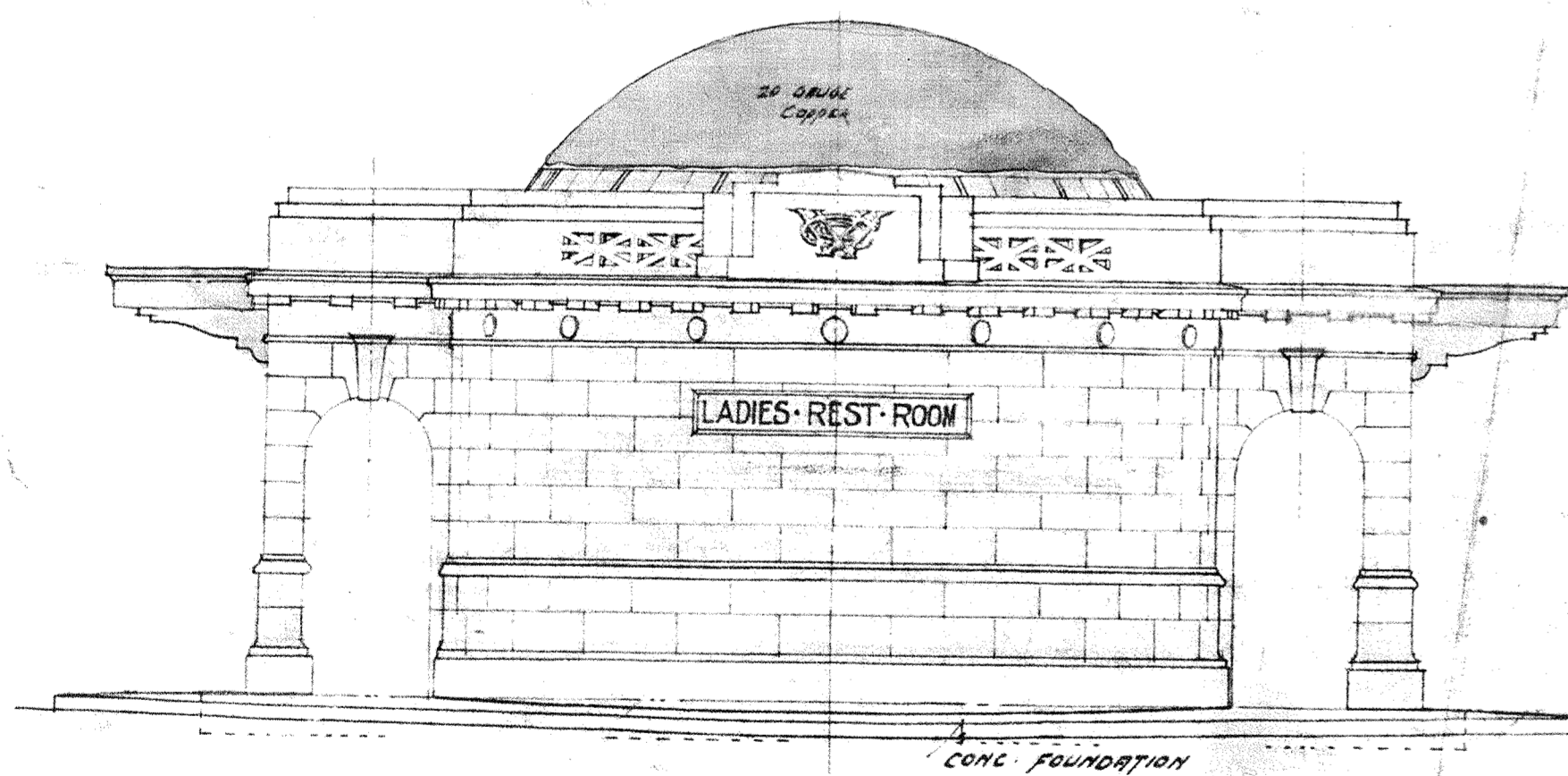


— SECTION BB —

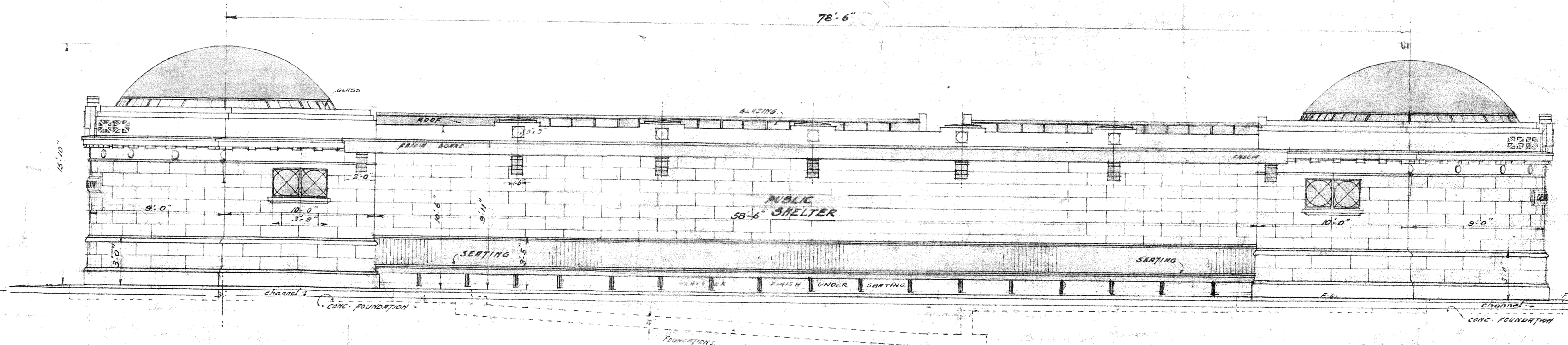


— SECTION CC —

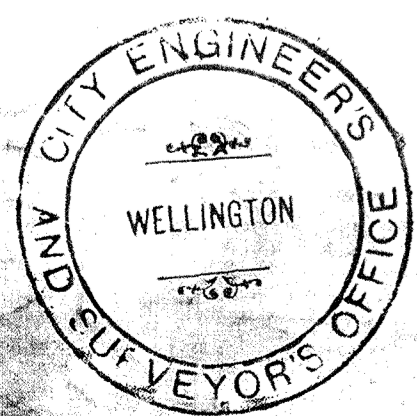
Specification assigned to the ...
... day of ... 1927, between ...
Wellington City Council and ...
Contractor ...
Handwritten signature: Geo. A. Hart
TOWN CLERK



— END ELEVATIONS —



— SIDE ELEVATIONS —



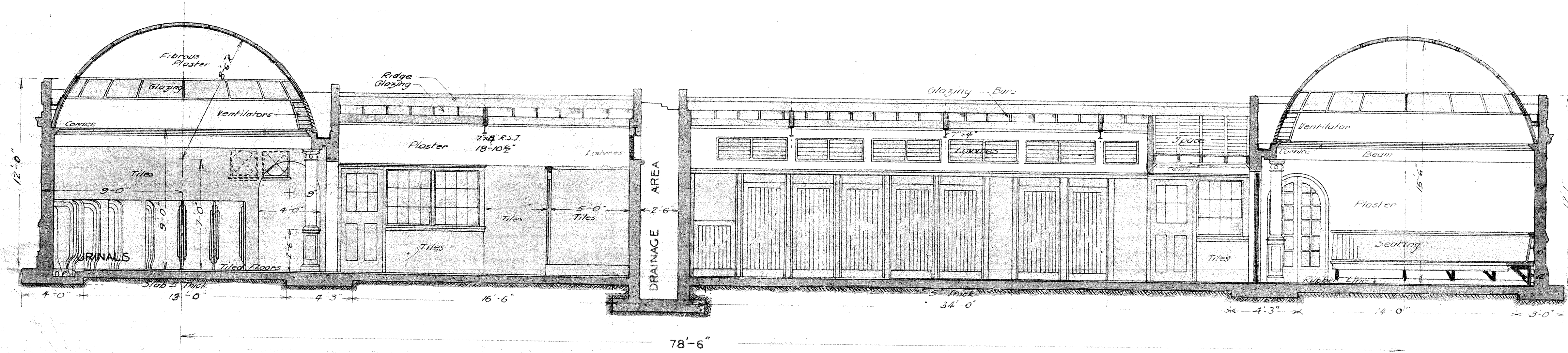
Handwritten signature: Geo. A. Hart
14 July 1928
M. INST. C.E.
CITY ENGINEER

CITY ENGINEER'S DEPT.	
Master Trading No. 5931	
DESIGNED BY	Geo. A. Hart
DRAWN BY	Geo. A. Hart
APPROVED BY	Geo. A. Hart
REF. No. 28/578	
GEO. A. HART, M. INST. C.E. CITY ENGINEER	

No 1 PLAN AND LONGITUDINAL SECTION

DRAWING No 1 CONTRACT No

SCALE 1/4 IN = ONE FT.

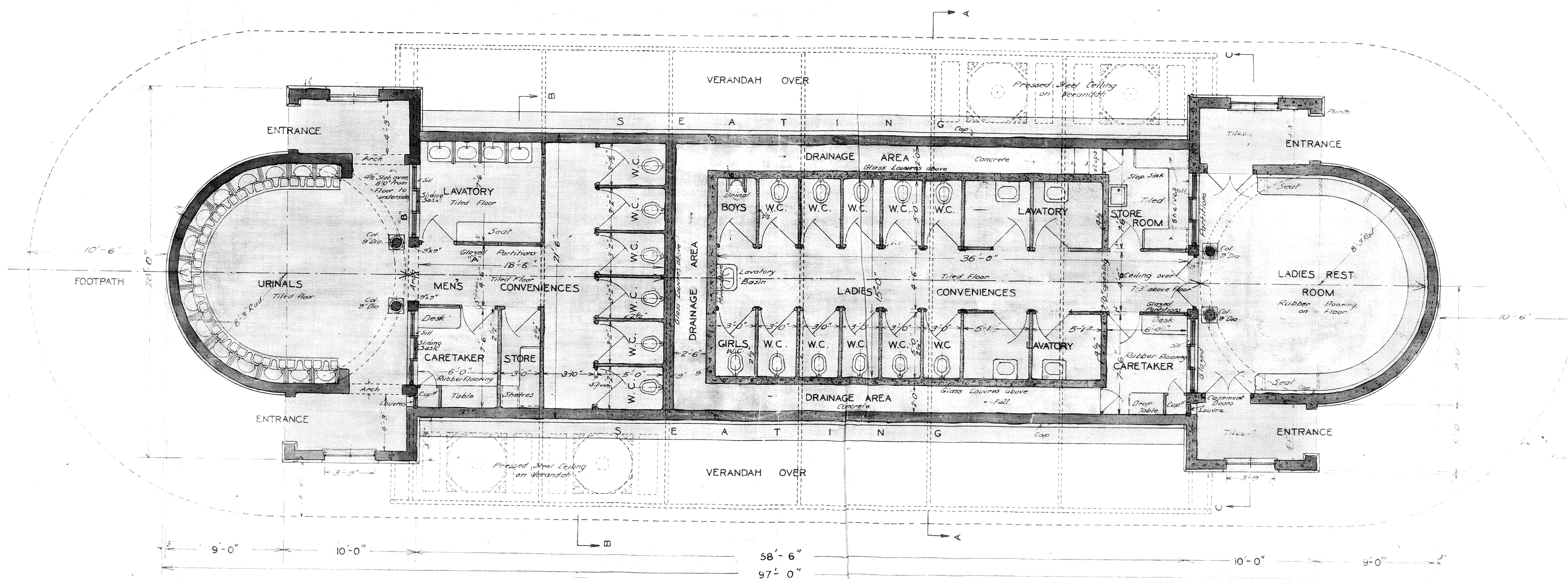


LONGITUDINAL SECTION ON CENTRE LINE

NOTE - ALL DIMENSIONS ARE BETWEEN CONCRETE WALLS

This is the Plan No. 1... referred to in the Specification annexed to Contract made the ... day of ... 1927, between the Wellington City Council and The Wellington Construction Company Limited.

Contractor: The Wellington Construction Company Limited. Signatures of P. Lowe (Town Clerk) and J. Gilbert (Contractor).



FLOOR PLAN



Signature of City Engineer and date 14 July 1928.

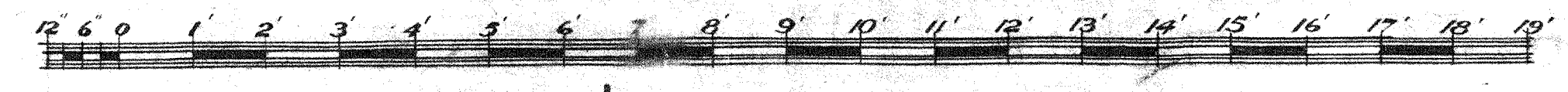
Table with columns for drawing details, including drawing number, date, and approval status.

Nº 5 DETAIL Nº 1

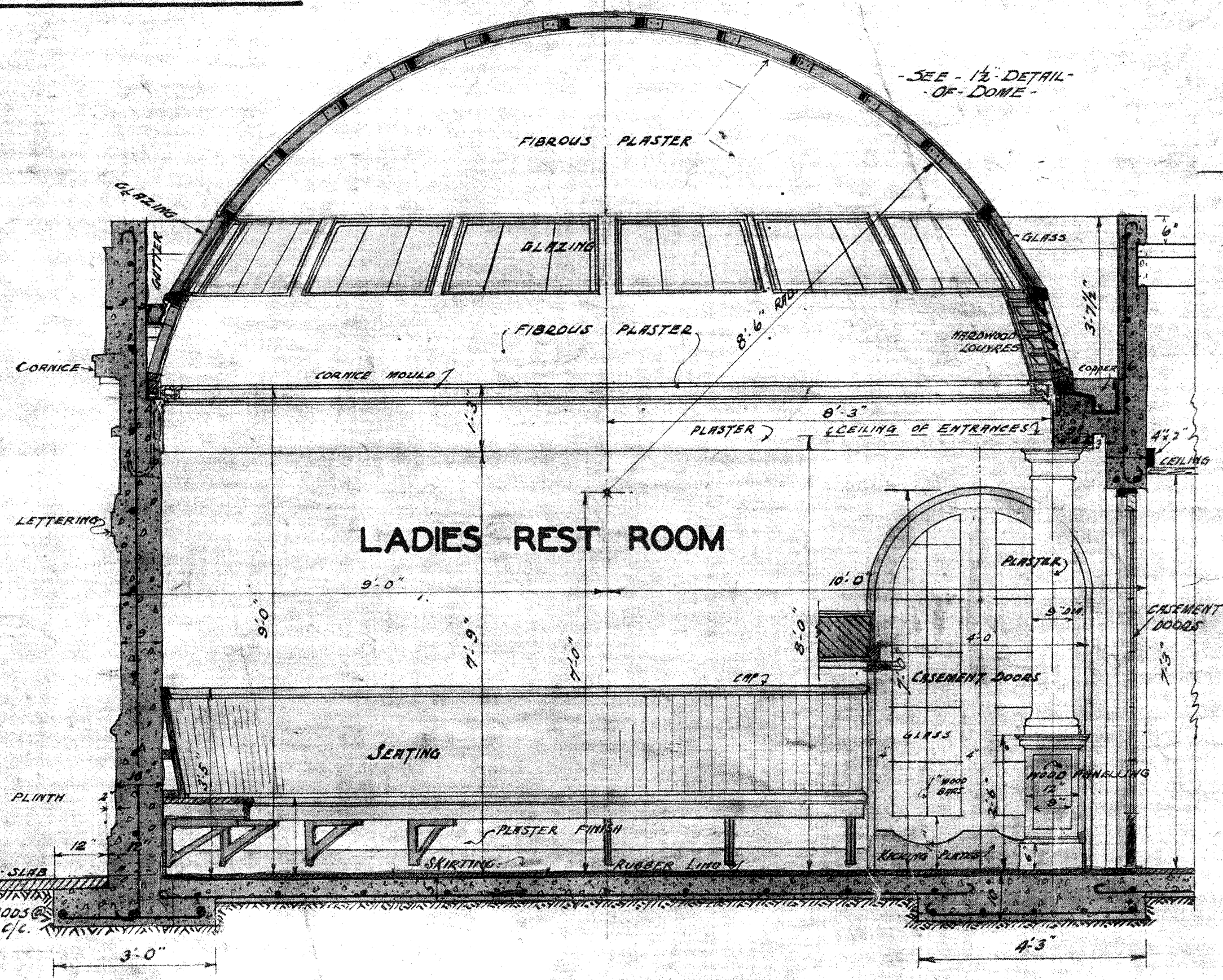
DRAWING Nº 5
CONTRACT Nº

This is the Plan No. 1, 67, referred to in the Specification annexed to Contract made the ... day of ... 19... between the Wellington City Council and The ... Construction Company Limited.

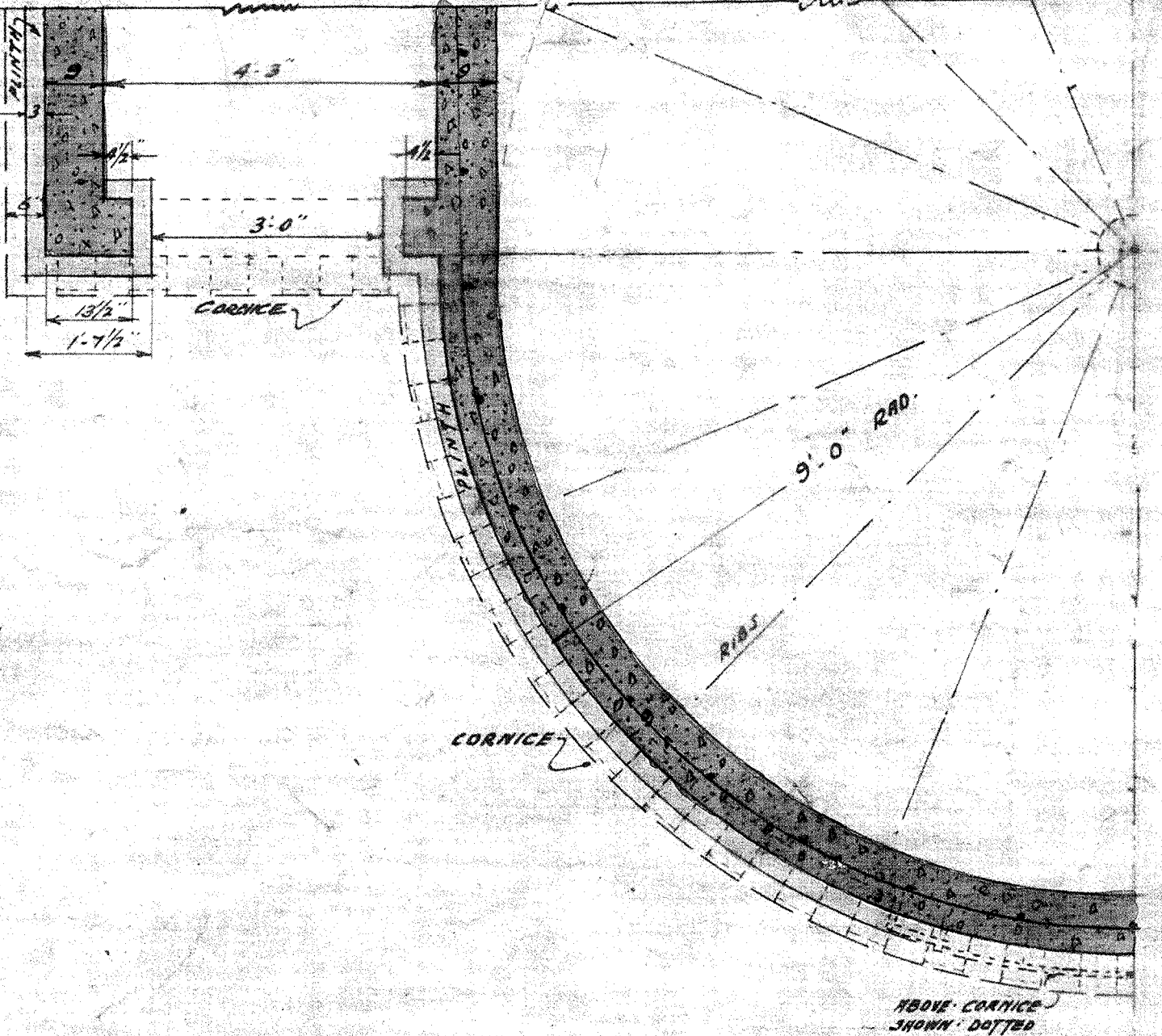
John ...
Contractor



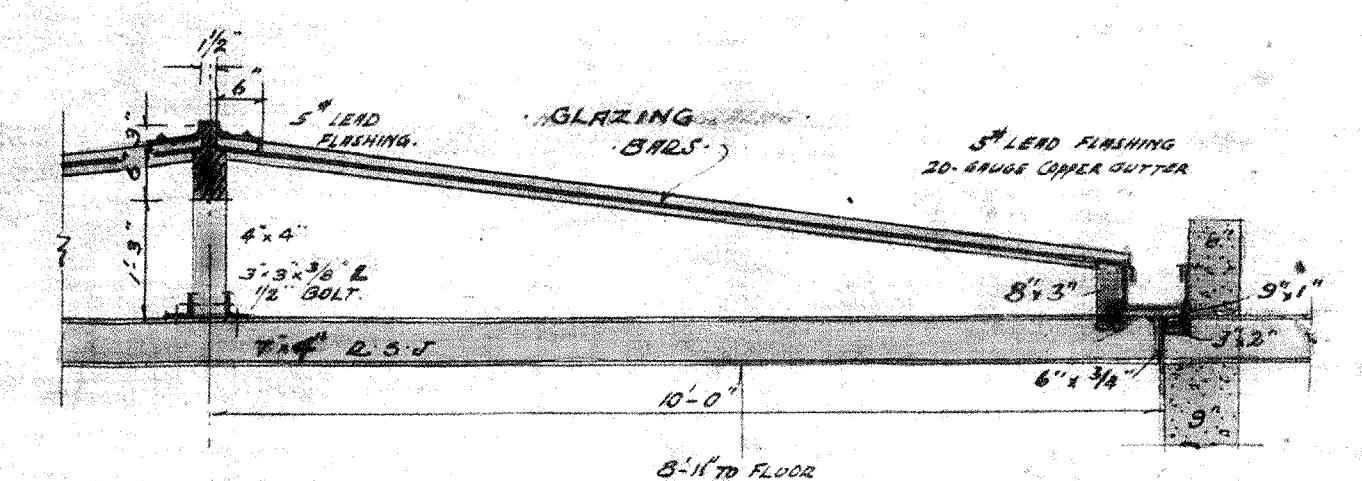
SCALE 1/2" = ONE FOOT



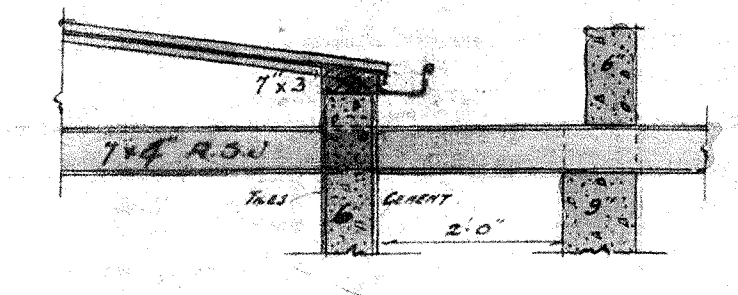
SECTION THROUGH
LADIES REST ROOM



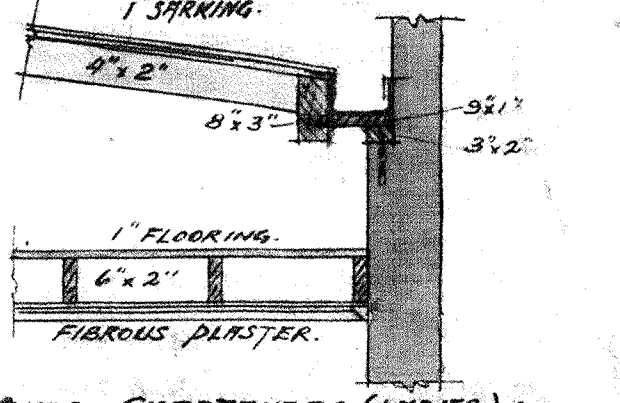
PART PLAN



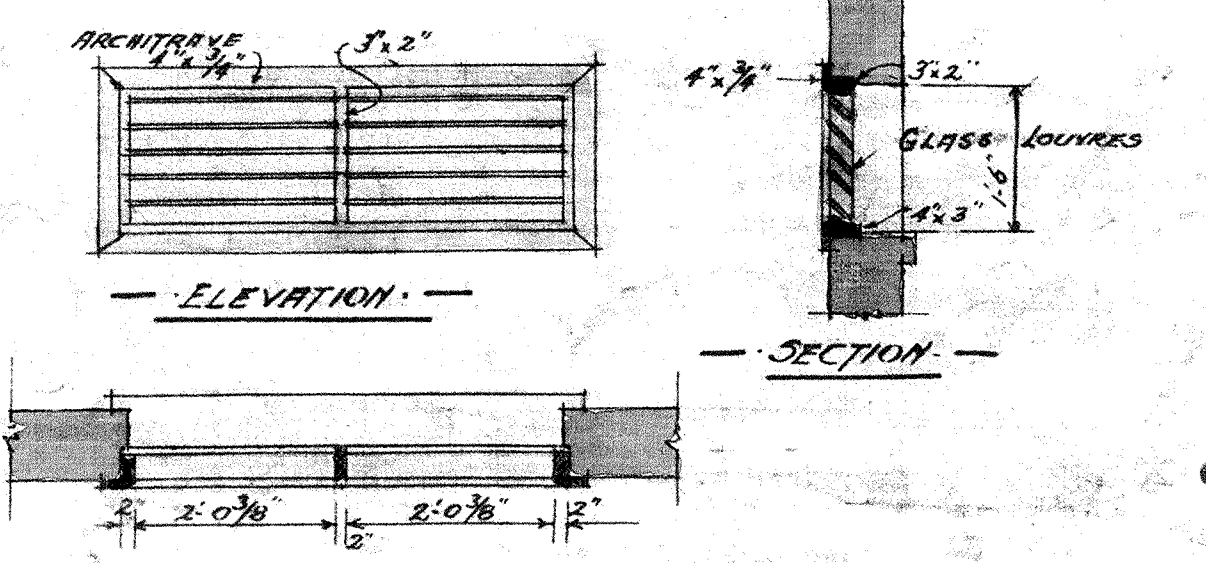
ROOF GLAZING
MENS CONVENIENCES



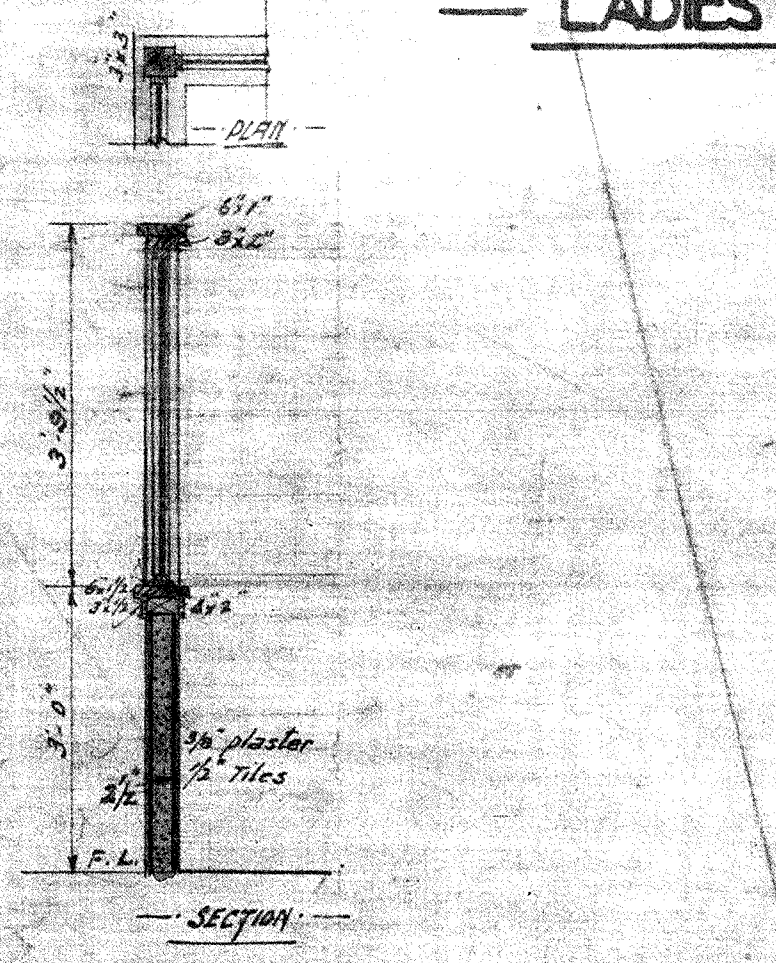
LADIES CONVENIENCES



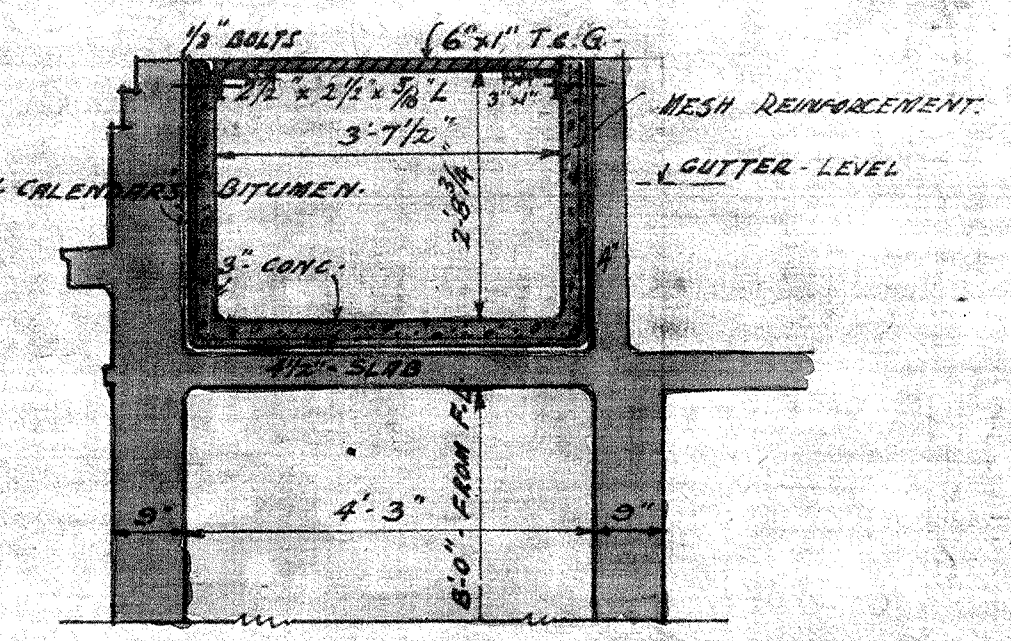
ROOF OVER CHRETHEERS (LADIES)



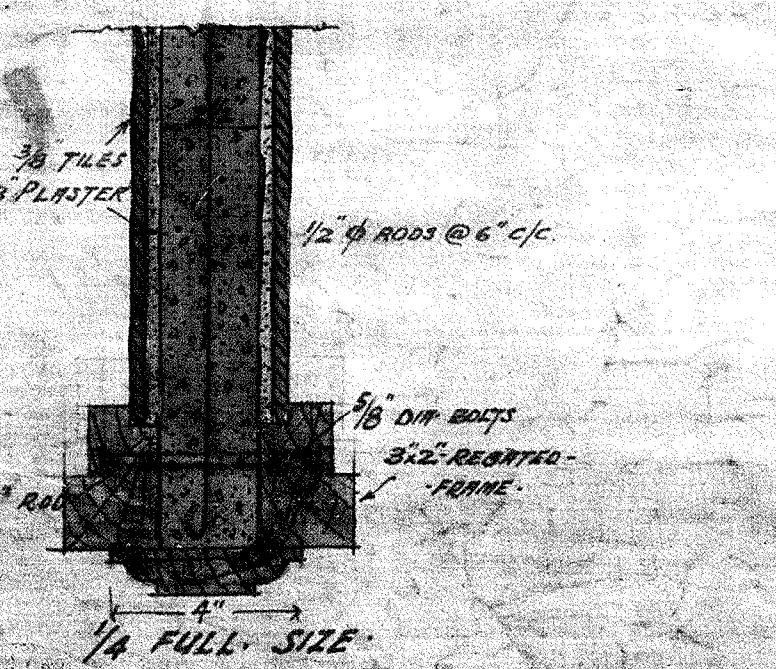
ELEVATION
SECTION



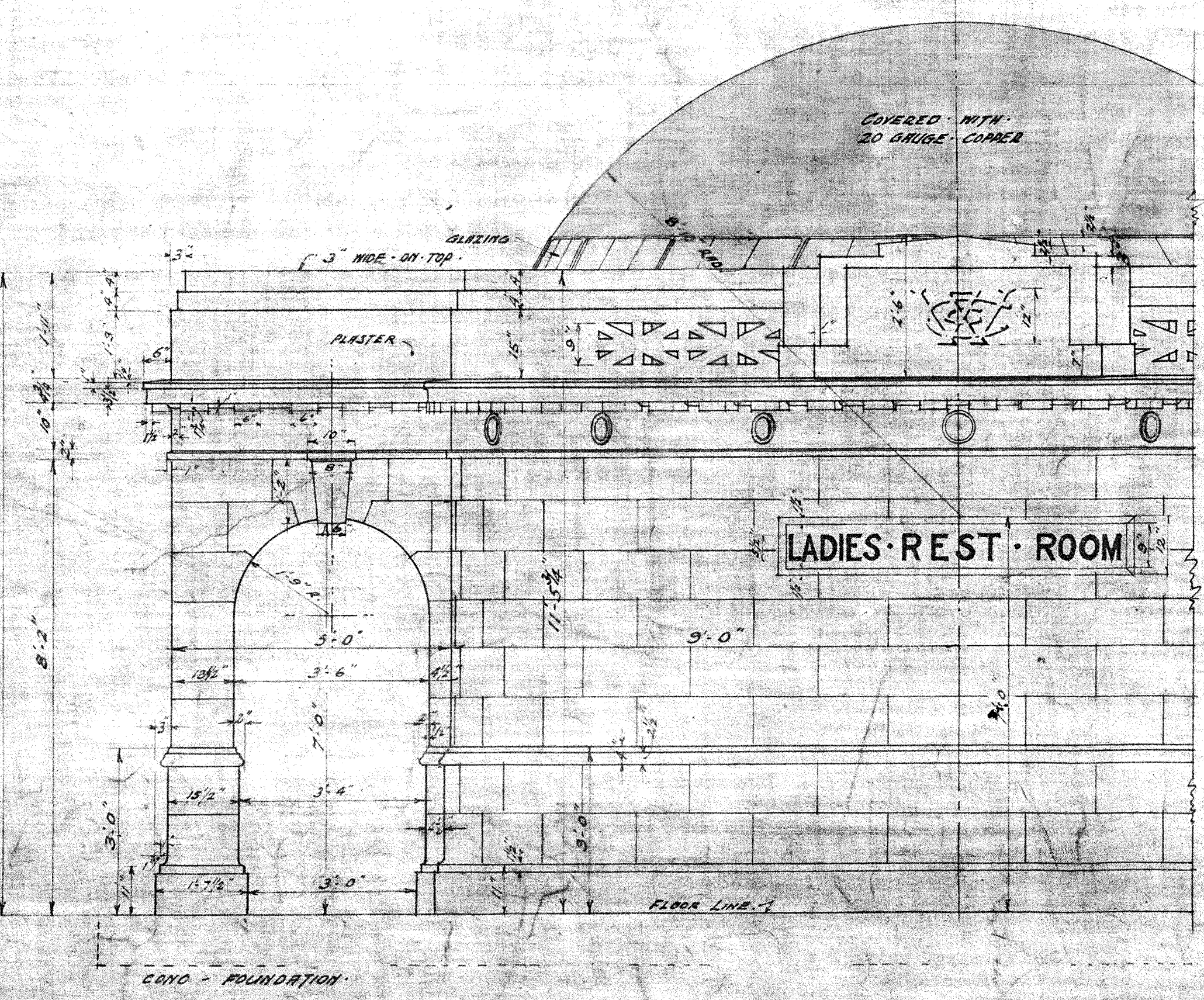
GLAZED PARTITIONS



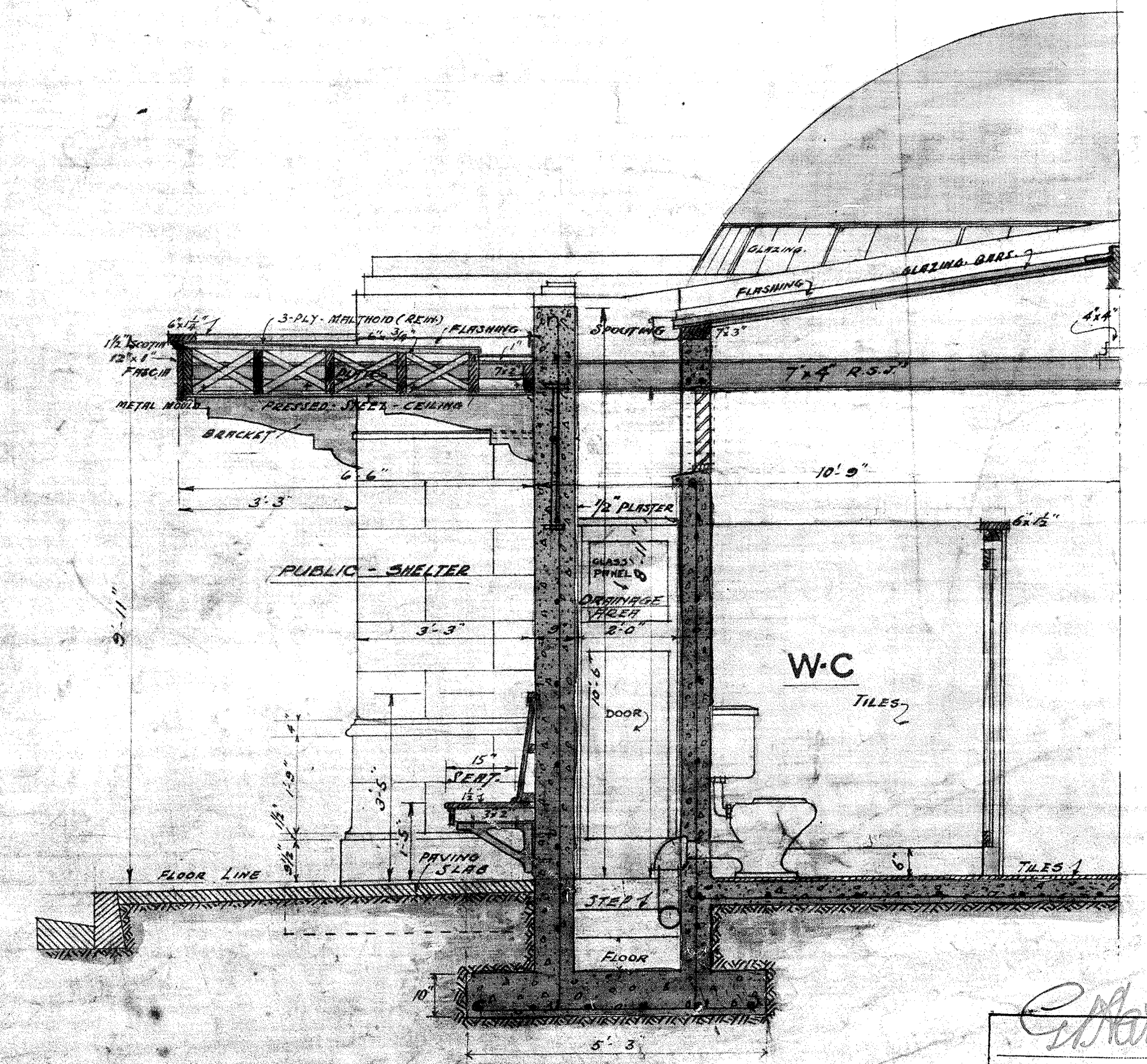
SUPPLY TANKS



W.C. DOORS ETC.



PART SOUTH ELEVATION



PART SECTION
-A-A-

CITY ENGINEERS DEPT.
No. 5934
1st Feb 1928
M. INST. C.E. CITY ENGINEER

N^o 3 FOUNDATION PLAN
ROOF PLAN

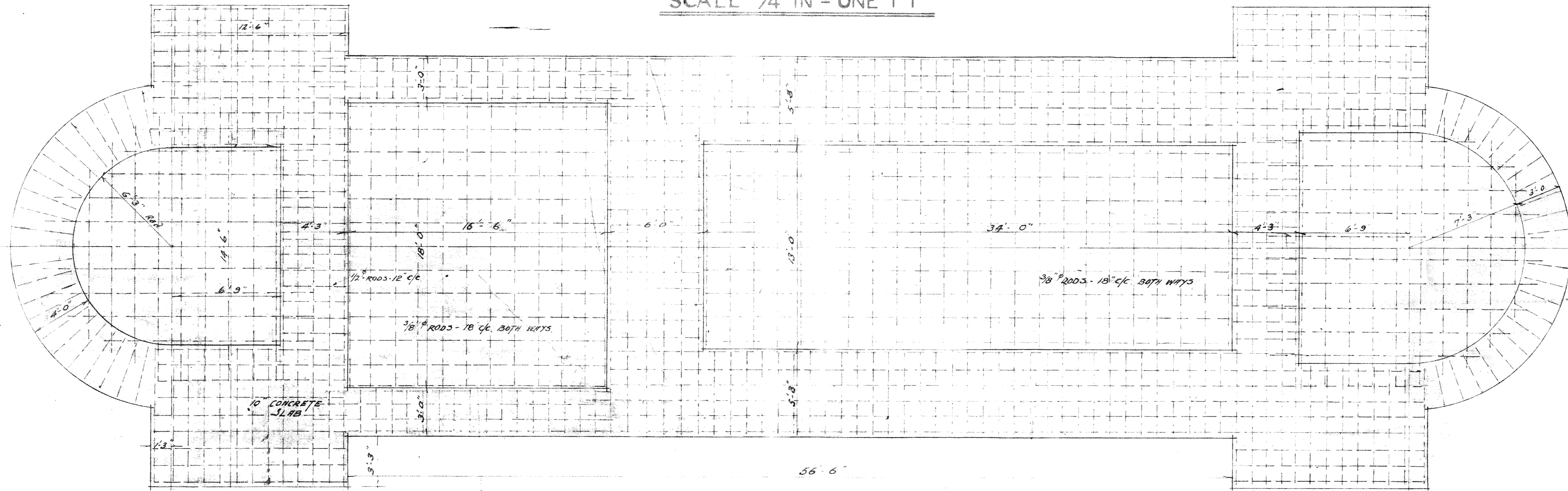
DRAWING N^o 3
CONTRACT N^o

This is the Plan No. 3... referred to in the
Specification annexed to Contract No. the
... day of ... 1927 between the
Wellington City Council and The T. H. Allen
Construction Company Limited

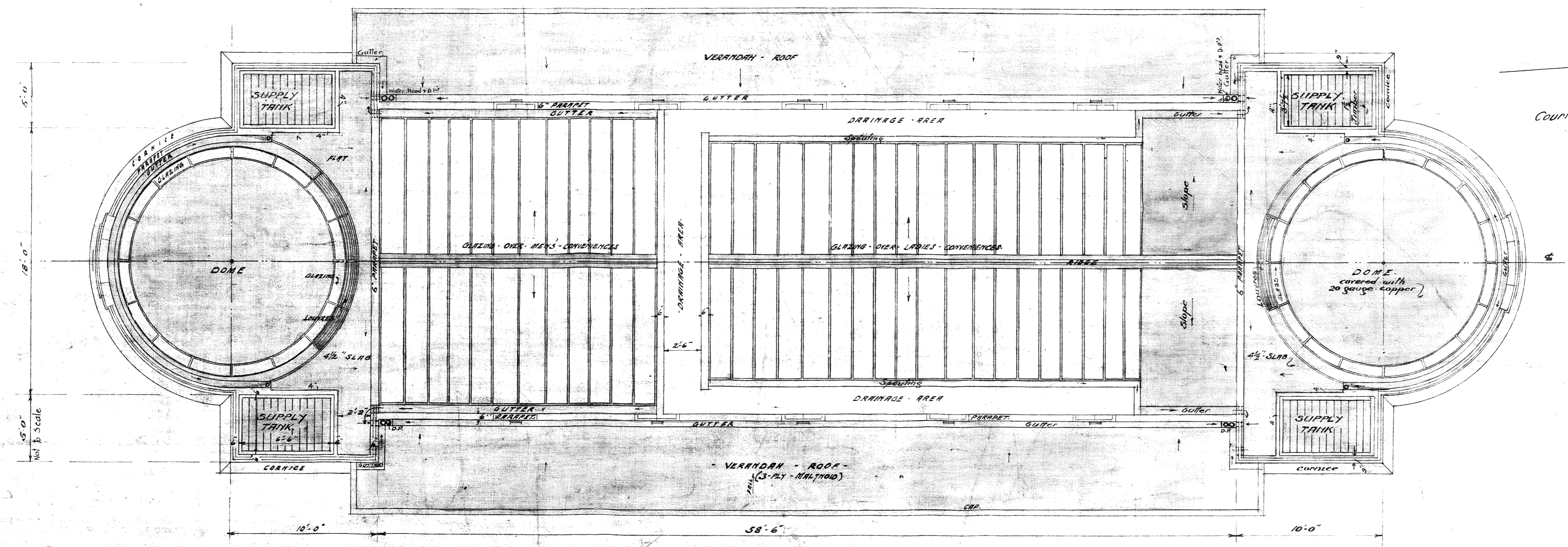
Wakefield St. *Wm. J. Whitehead*
Arthur J. Hay
Down Clerk. Contract No. *1000*



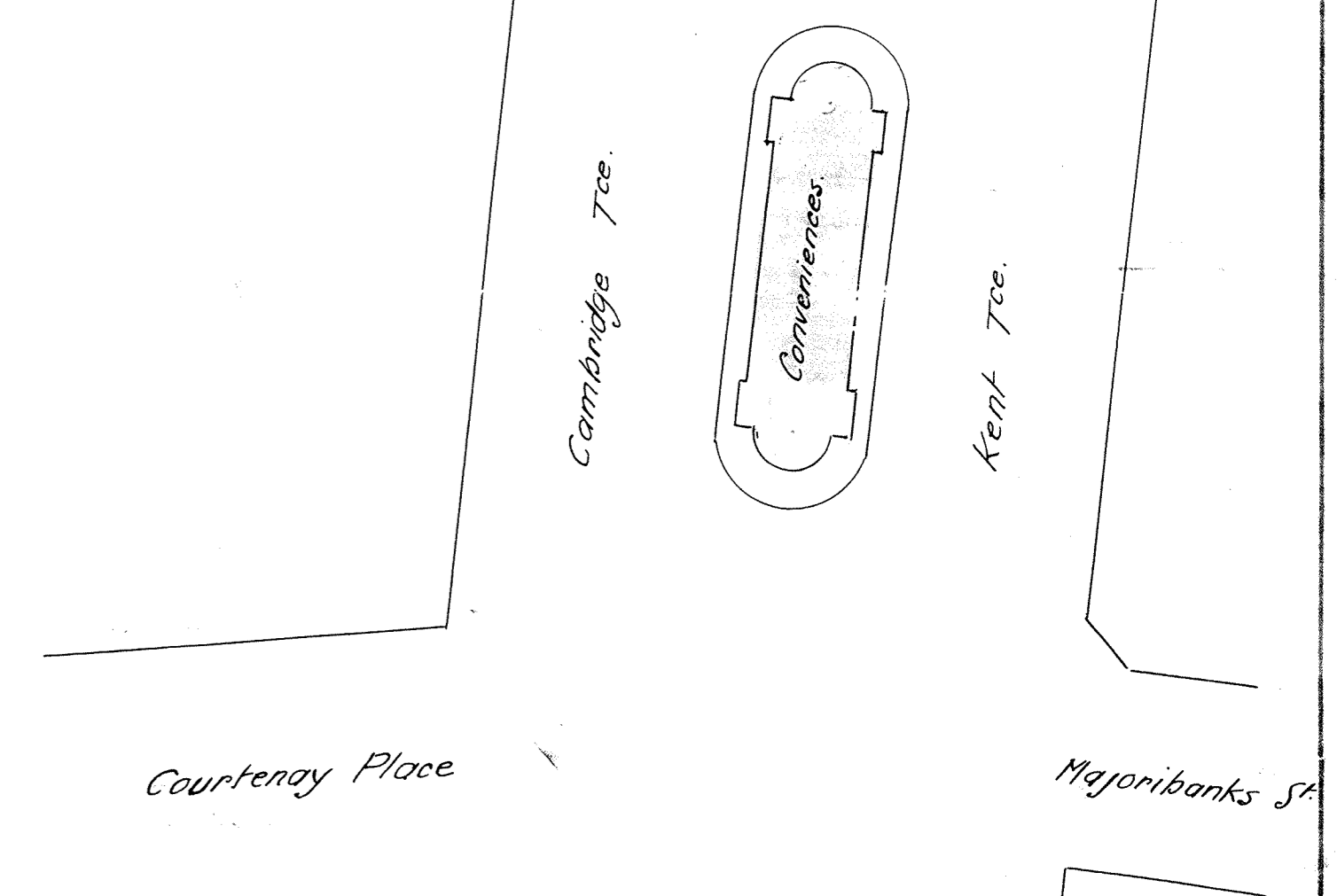
SCALE 1/4 IN = ONE FT



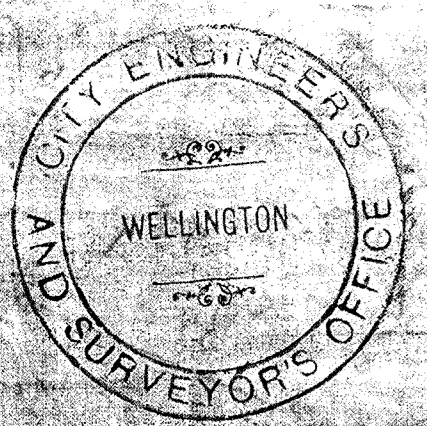
— FOUNDATION PLAN —
(SHOWING REINFORCEMENT)



— ROOF PLAN —



Scale 40 Feet to 1 Inch



W. J. Whitehead
M. INST. C.E.
CITY ENGINEER

CITY ENGINEER'S DEPT.	
MASTER TRACING No	5932
DESIGNED BY	
DRAWN BY	L. J. Jan. 1928
CHECKED BY	L. J.
APPROVED BY	11/26
REF. No.	28/570
PREPARED BY	
CHECKED BY	
APPROVED BY	
CITY ENGINEER	

