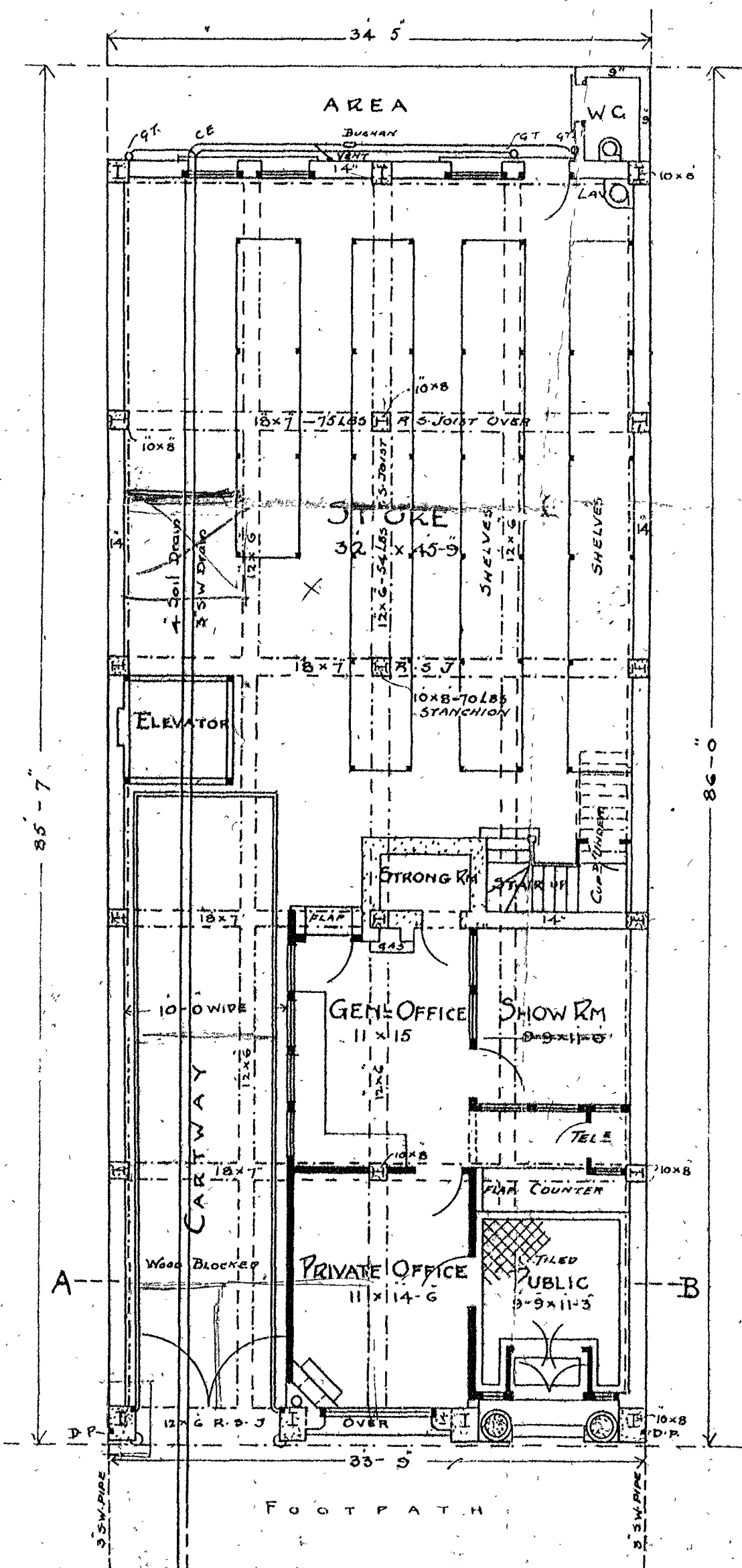


B

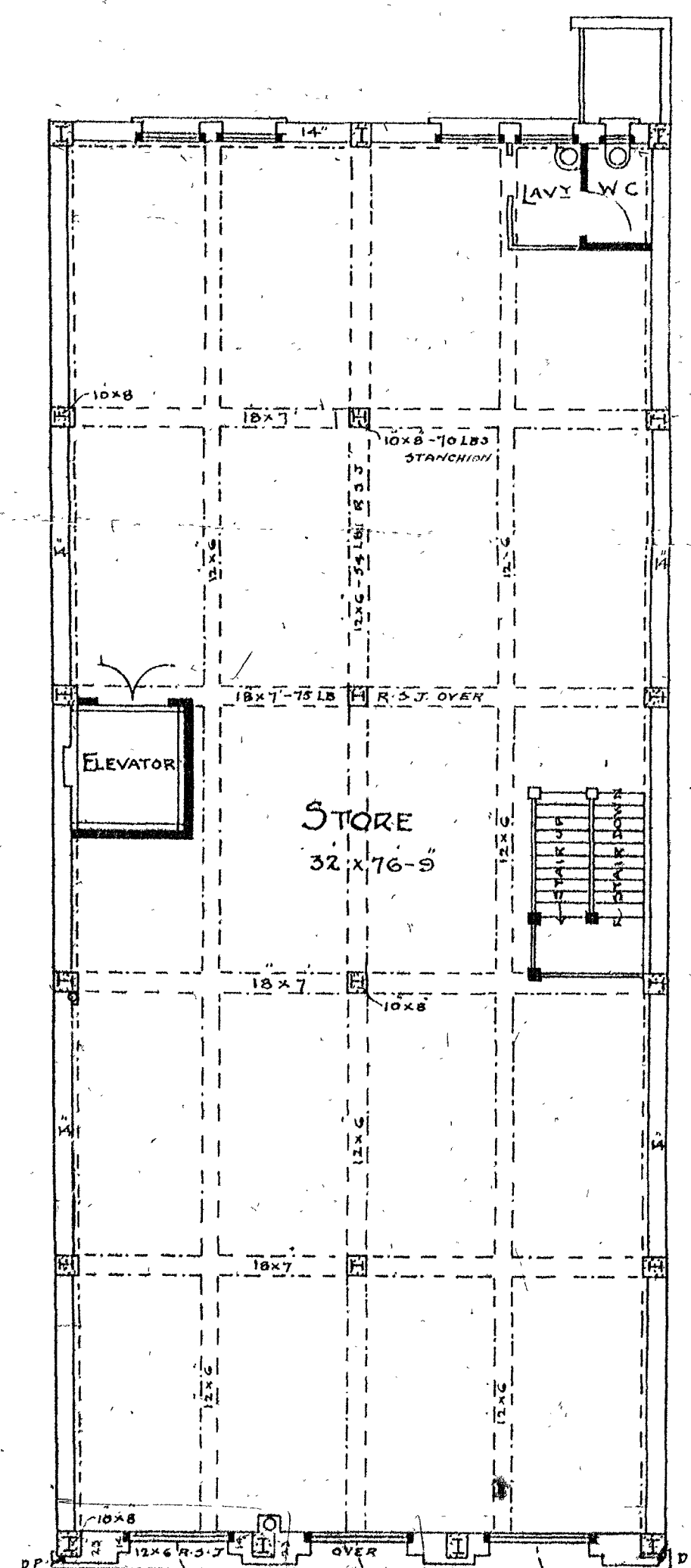
NEW PREMISES, CHAUZNEE ST. FOR CADBURY BROS. LTD.

SCALE, 1/8" = 1 FOOT

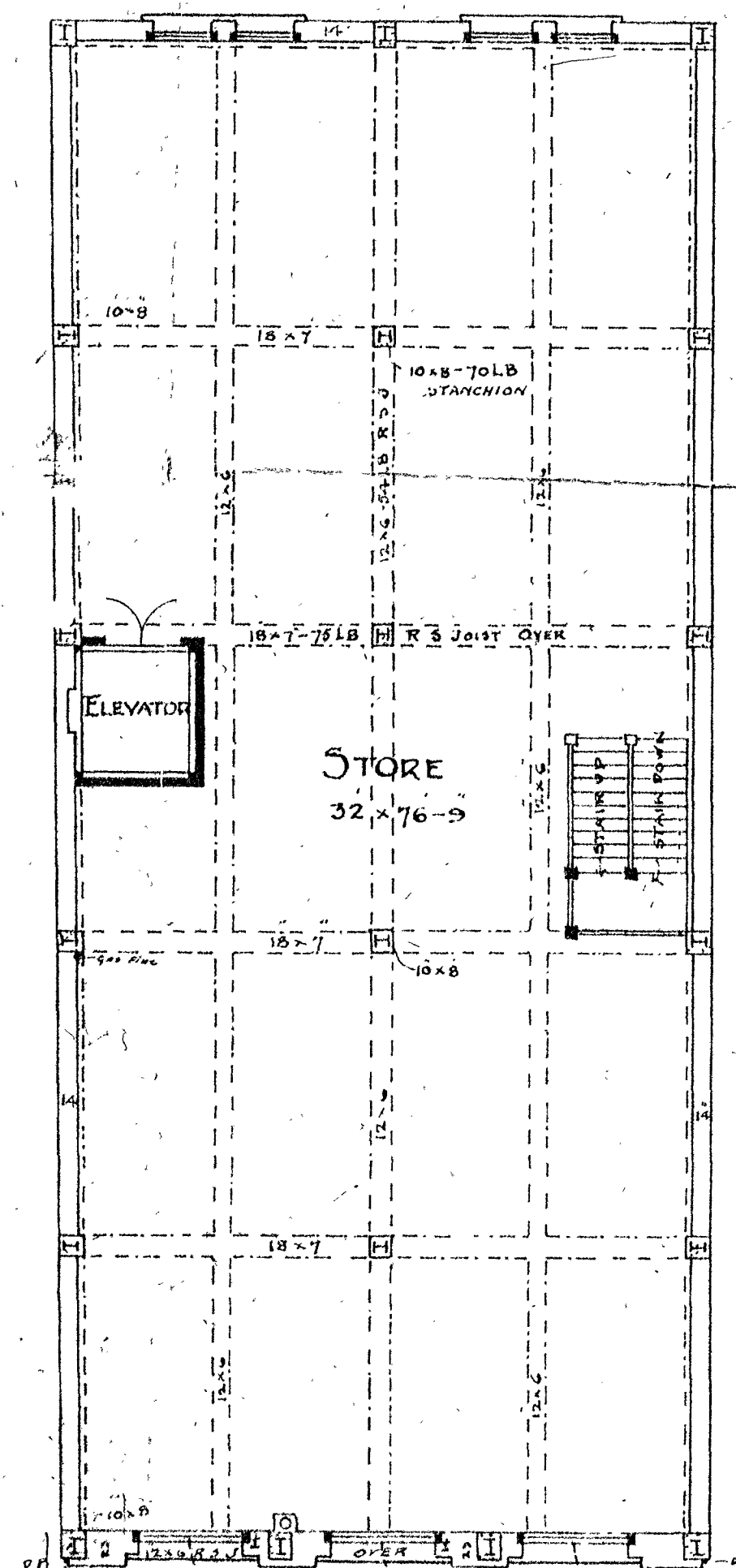
*W. Gifford & Prouse
Architects.
Sept 14th 1908.*



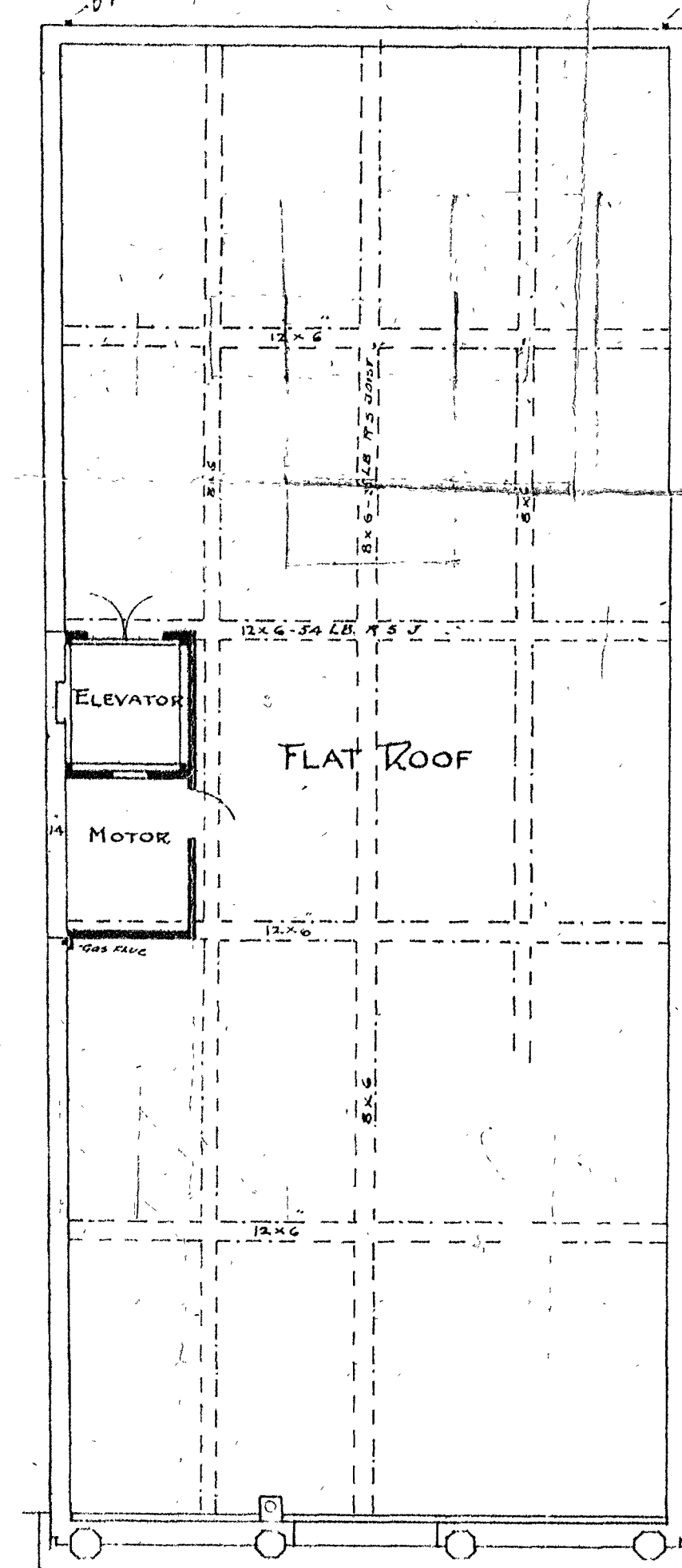
GROUND PLAN
CHAUZNEE ST.



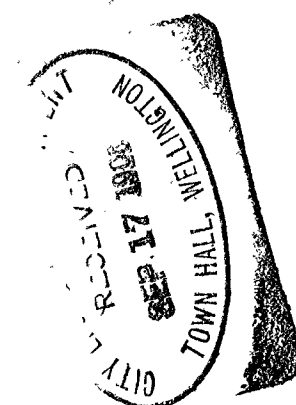
FIRST FLOOR



2ND & 3RD FLOORS



ROOF PLAN

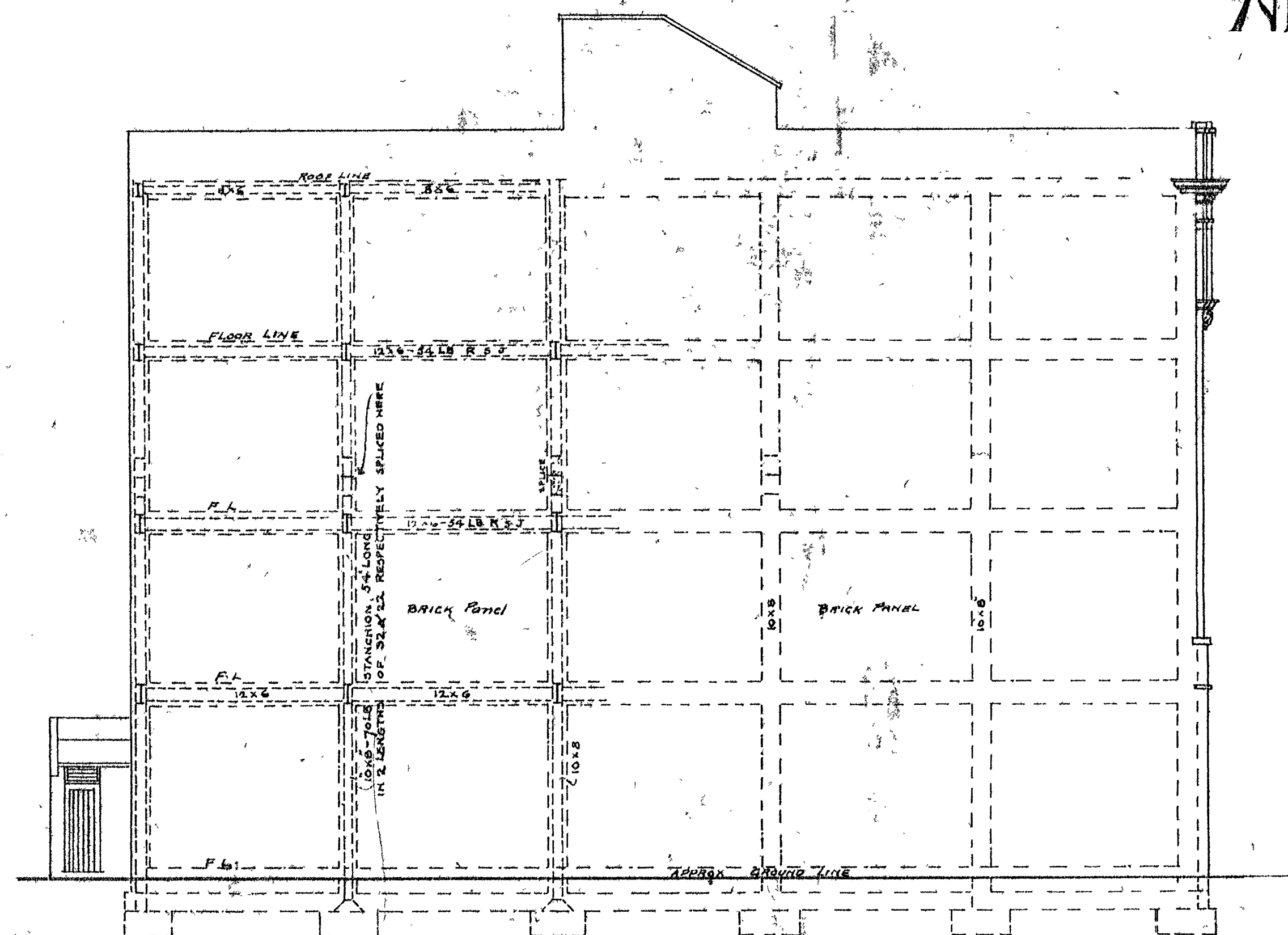


B

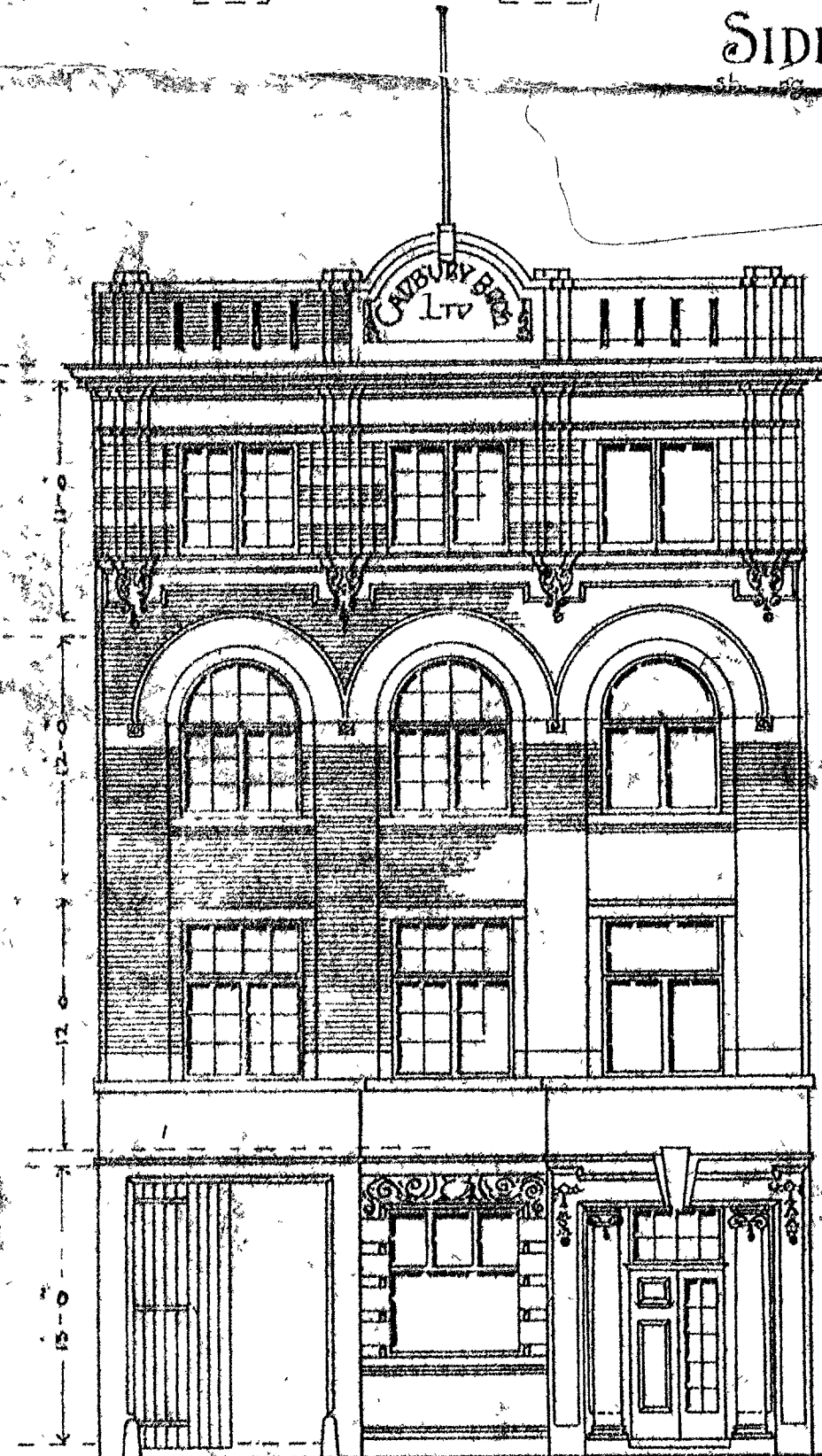
NEW PREMISES, CHAZNEE ST^T FOR CADBURY BROS LTD

SCALE $\frac{1}{8}$ " = 1 FOOT

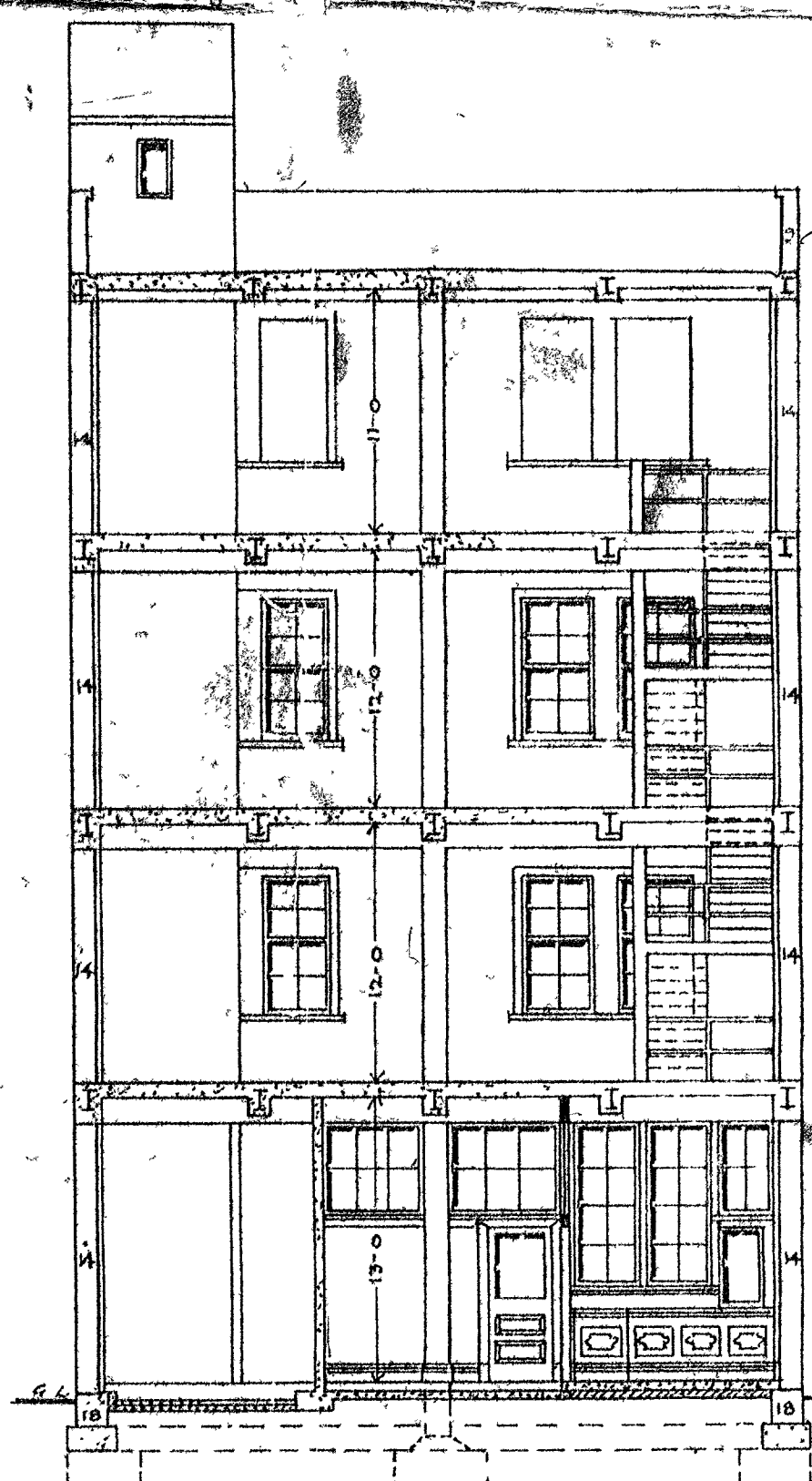
*Staggard & Prouse
Architects
Sept 4th 1906*



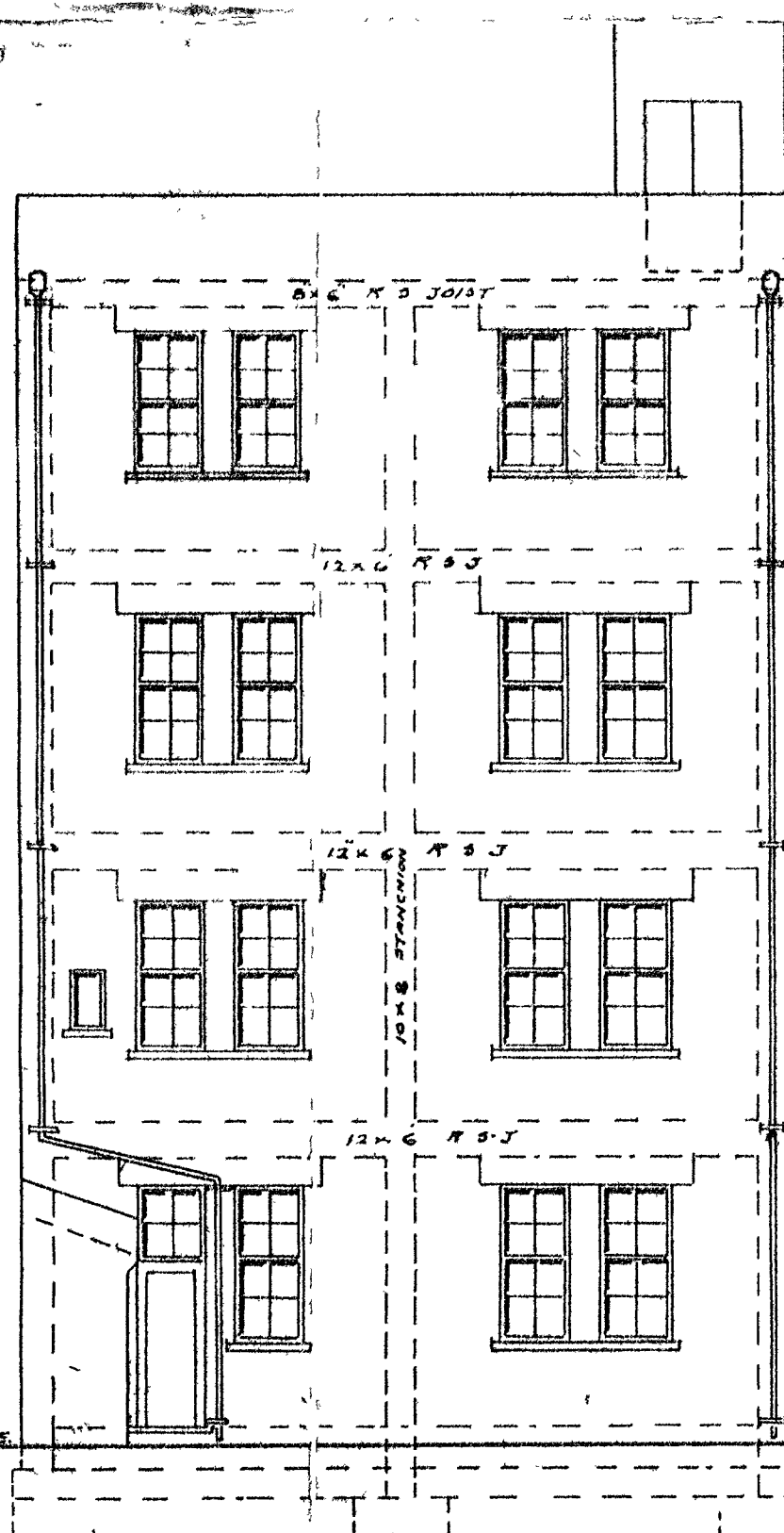
SIDE ELEVATION



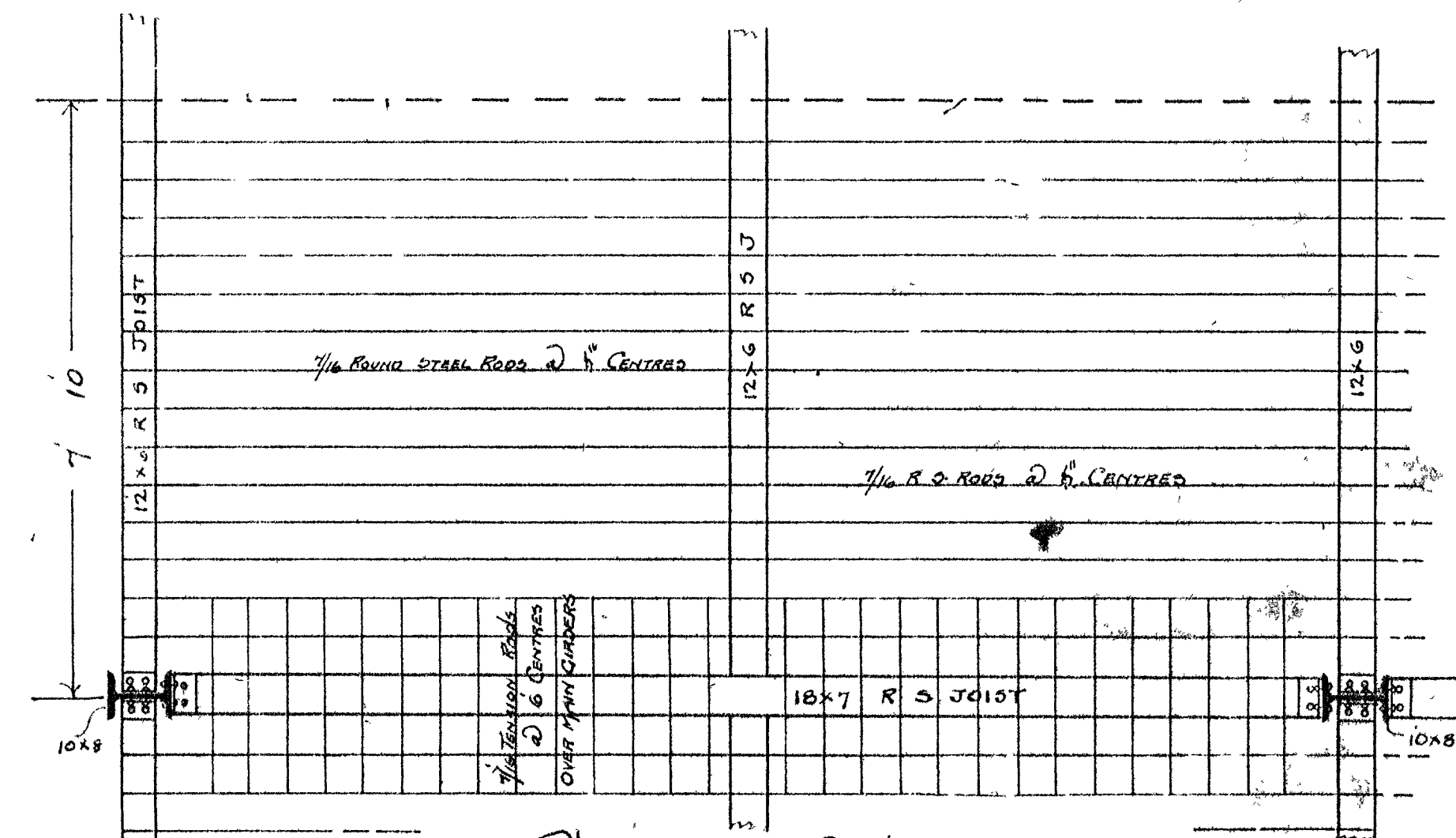
FRONT ELEVATION



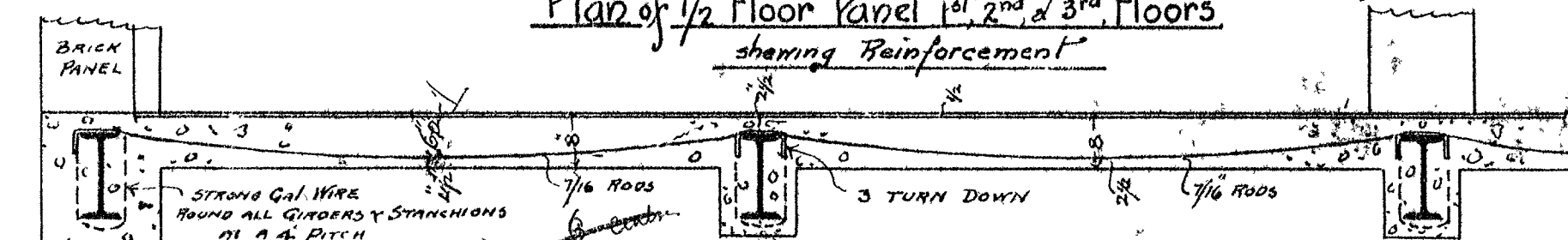
SECTION A-B



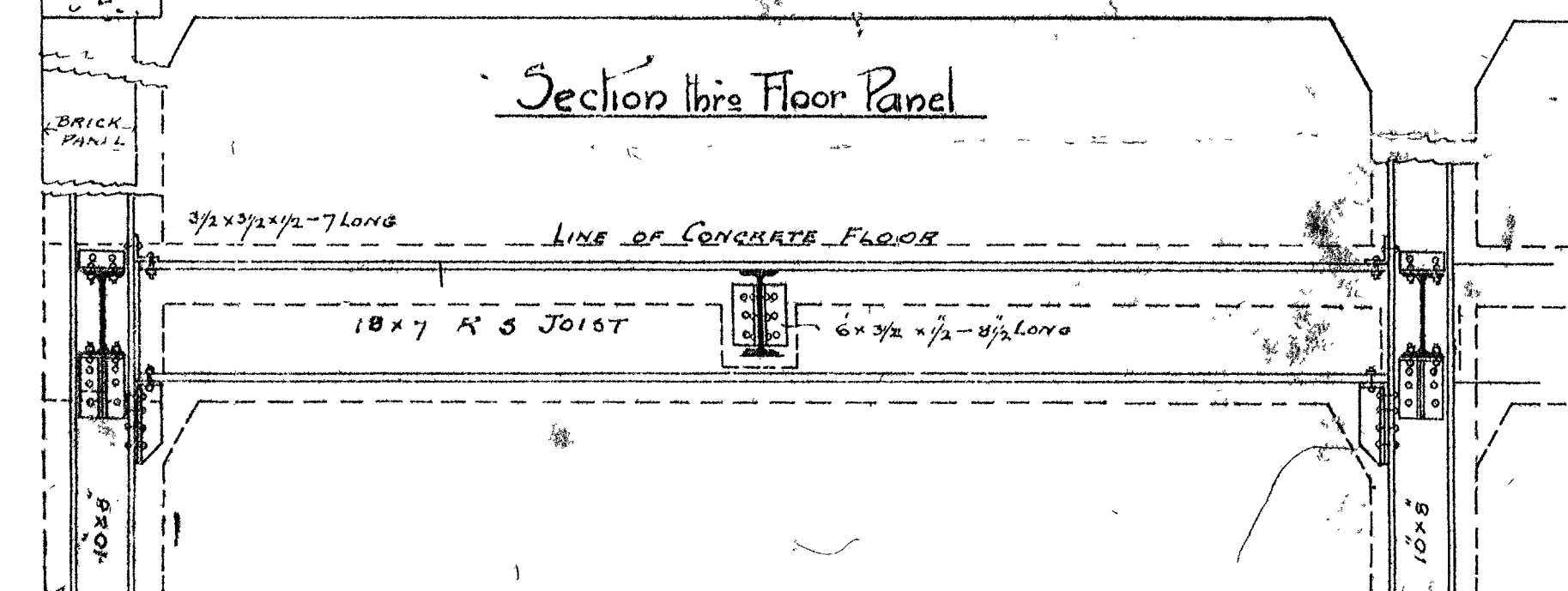
BACK ELEVATION



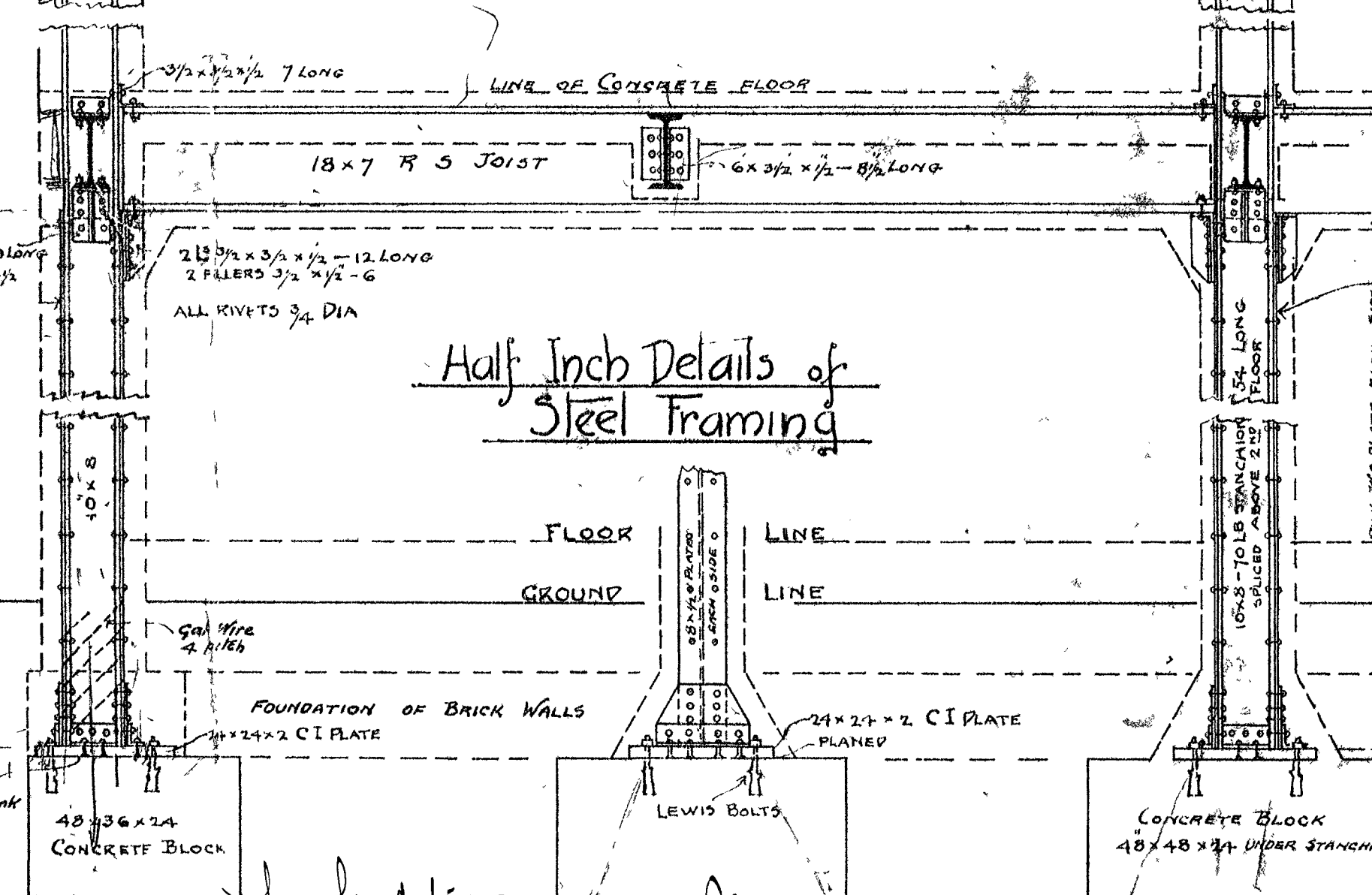
Plan of 1/2 Floor Panel for 2nd & 3rd Floors
showing Reinforcement



Section thru Floor Panel



Half Inch Details of
Steel Traming



for foundations see *united plan*
78

*Print may be issued
with the usual
Deform. Co. mark
W.P.A.
11.2.06*

