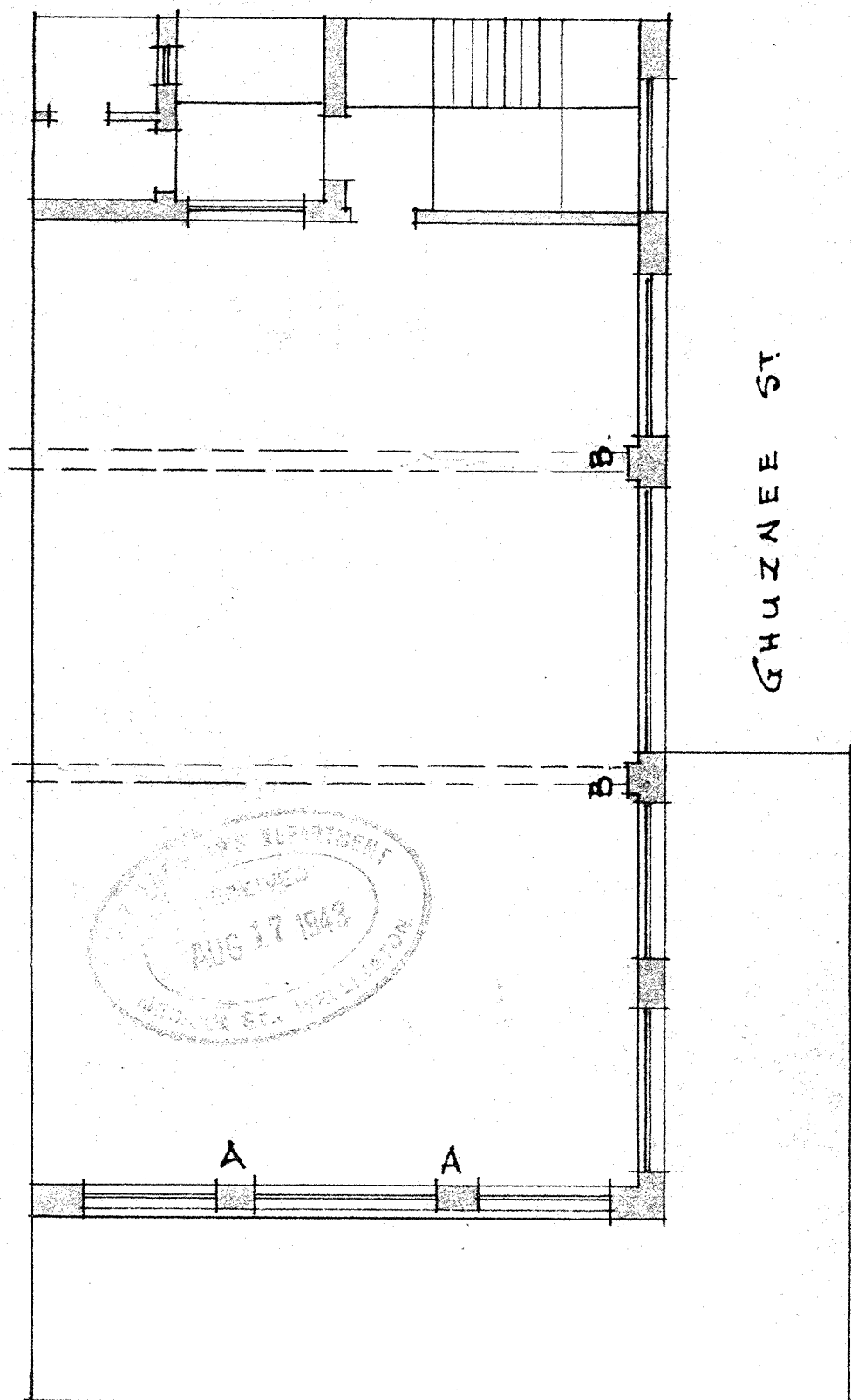
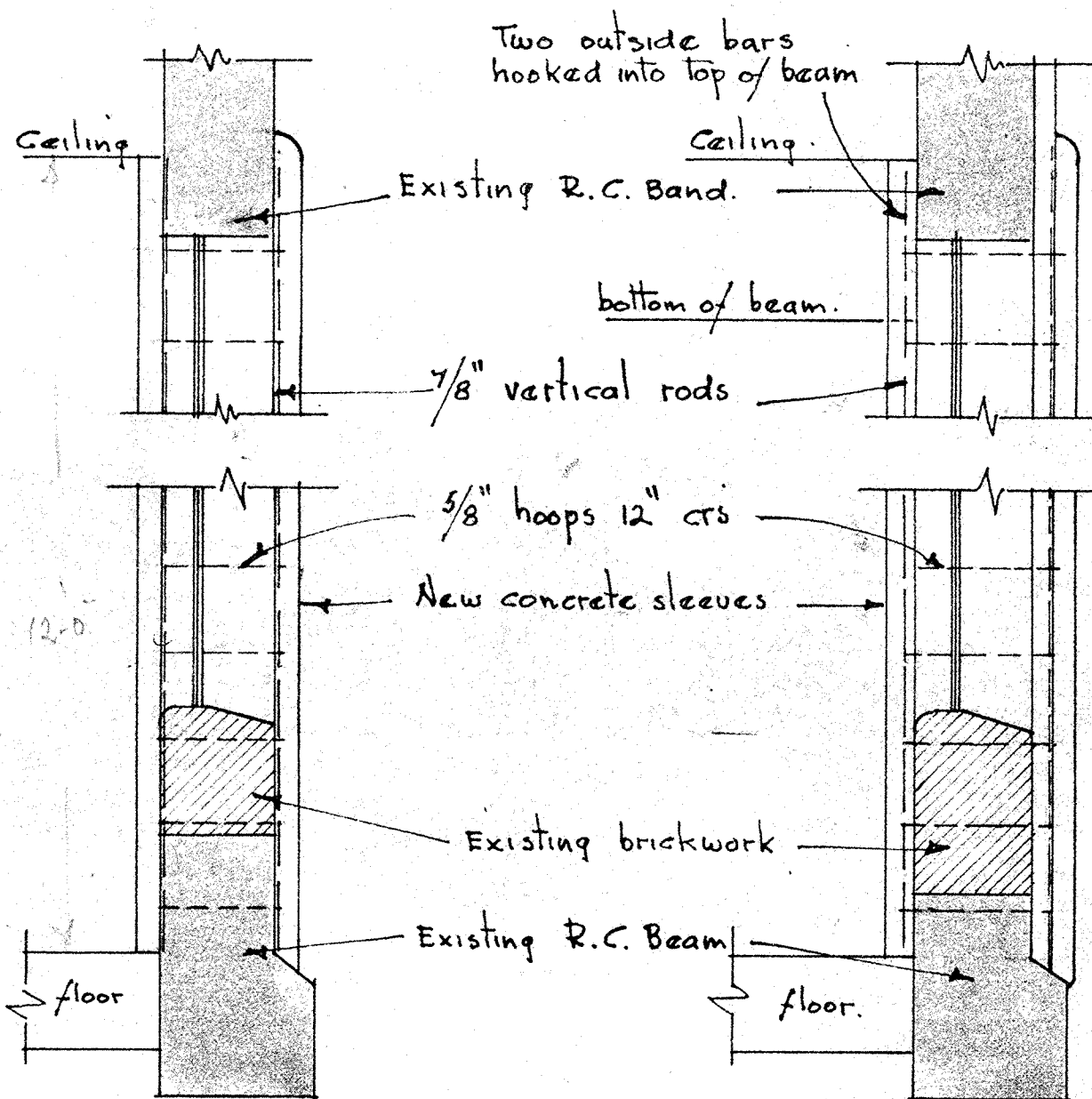


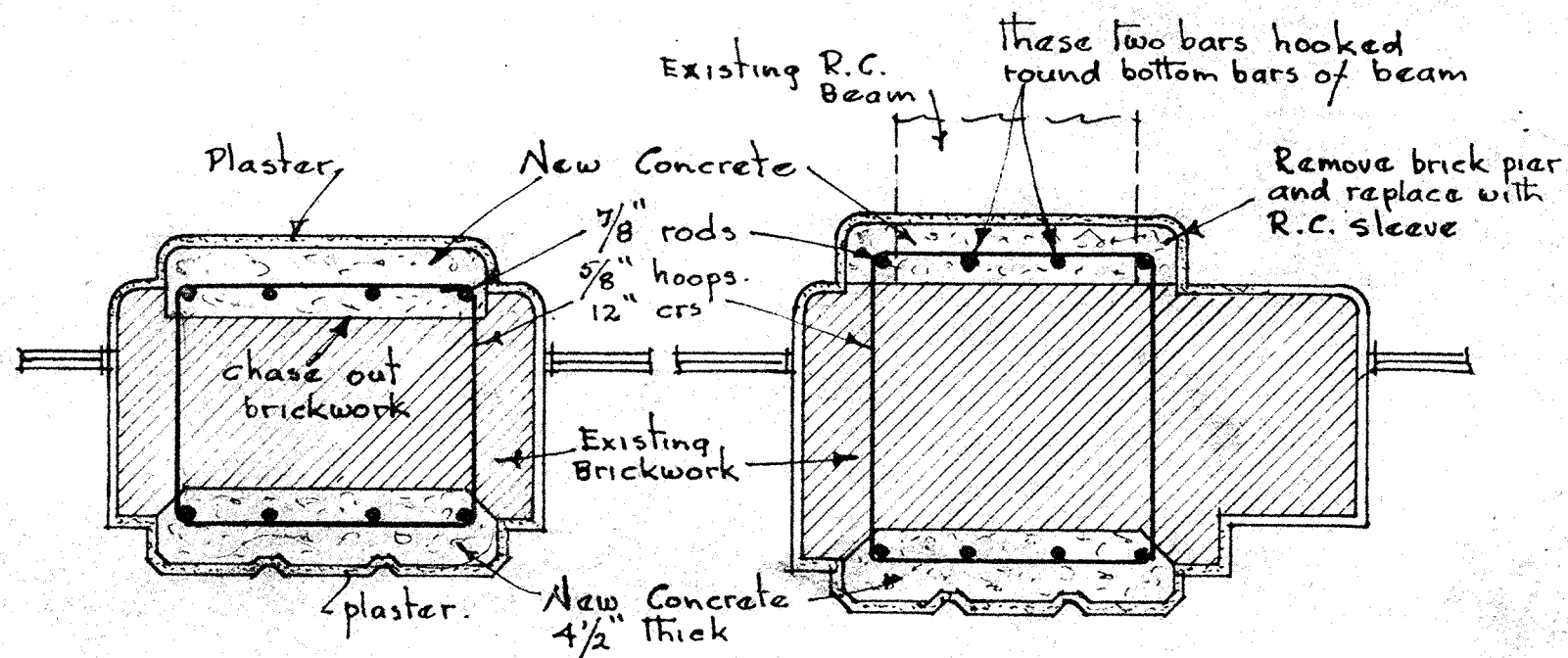
PROPOSED EARTHQUAKE
DAMAGE REPAIRS TO
BUILDING, CORNER CUBA ST X
GHUZNEE ST, H.G. PHILLIPS ESTATE
C.A. MARTIN A.N.Z.I.A.
REGISTERED ARCHITECT.



FIRST FLOOR PLAN
CUBA ST



SECTIONS. 1/2" SCALE



PIERS A.

PIERS B.

PLANS. 1" SCALE

DETAIL OF R.C. SLEEVES TO BRICK PIERS. A & B.

SCALE 1/8", 1/2", 1" to 1'-0"

All measurements to be checked on job.