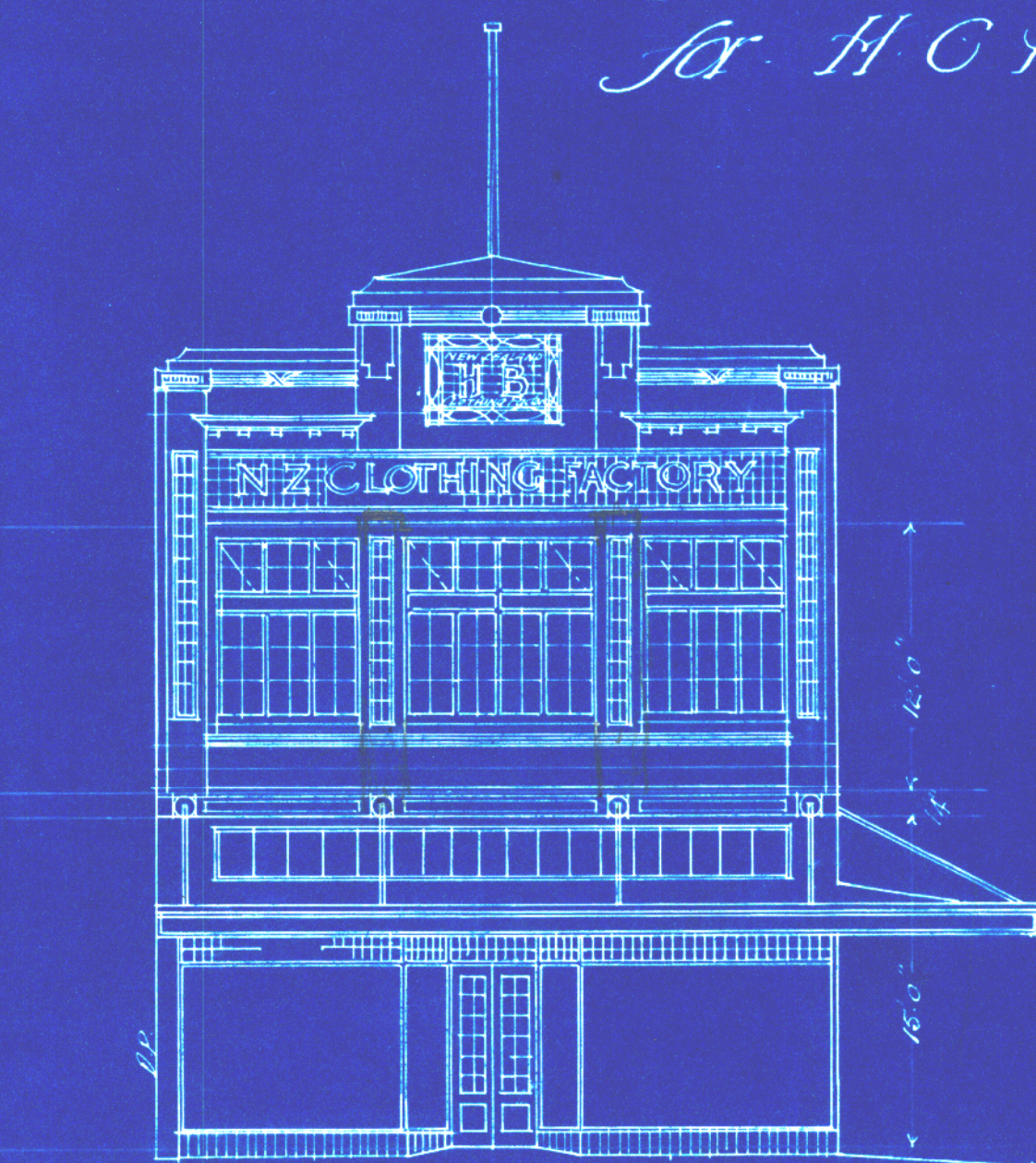
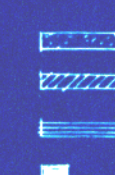


*Business Premises  
Cuba St. Wellington  
for H. C. Phillips Esq.*

*Sept. 1911*

*Scale 1/8" = 1 foot*

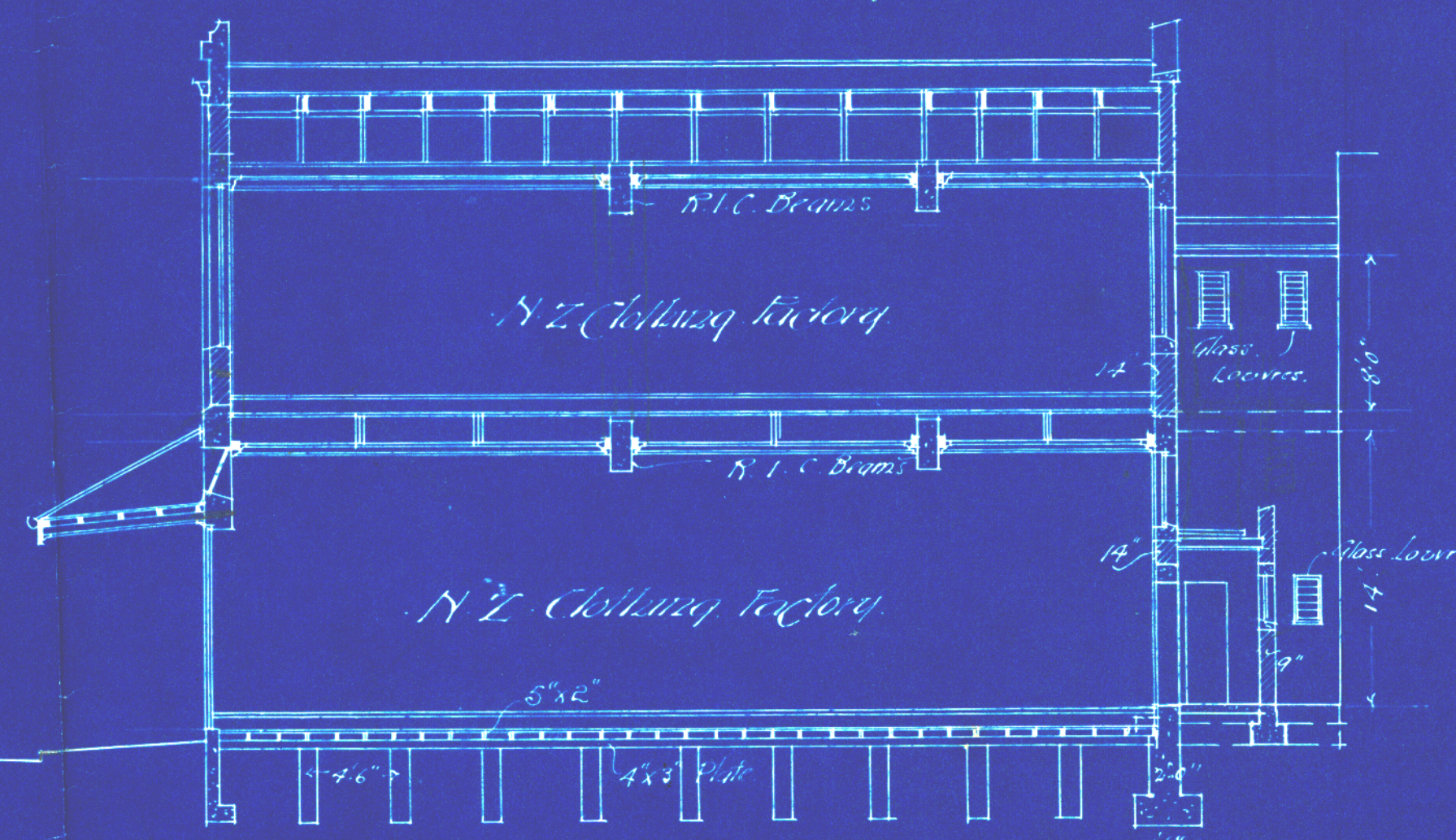
*Reynolds*  
Concrete Work  
Brickwork  
Woodwork  
" in Section



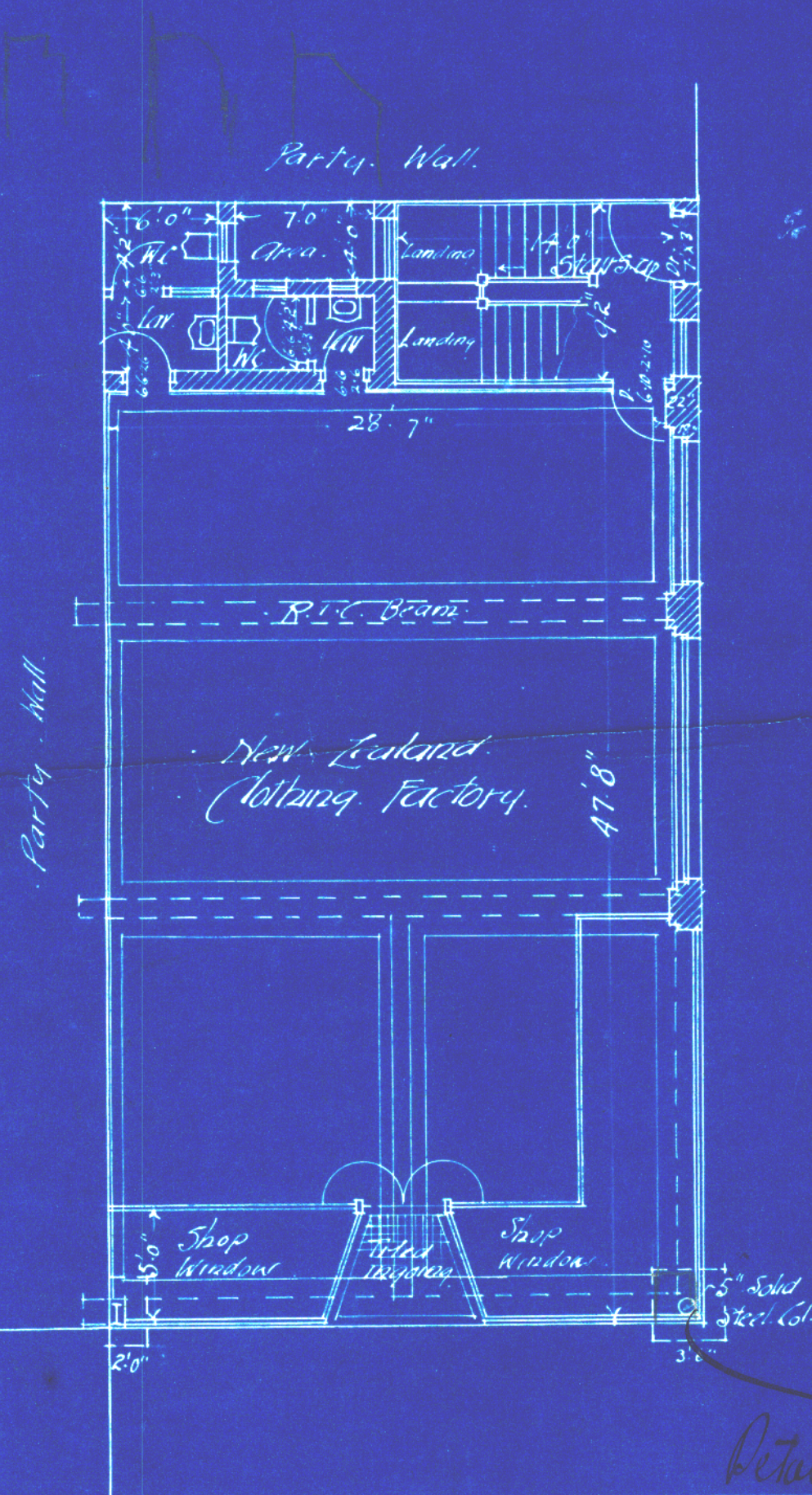
*Elevation to Cuba St.*



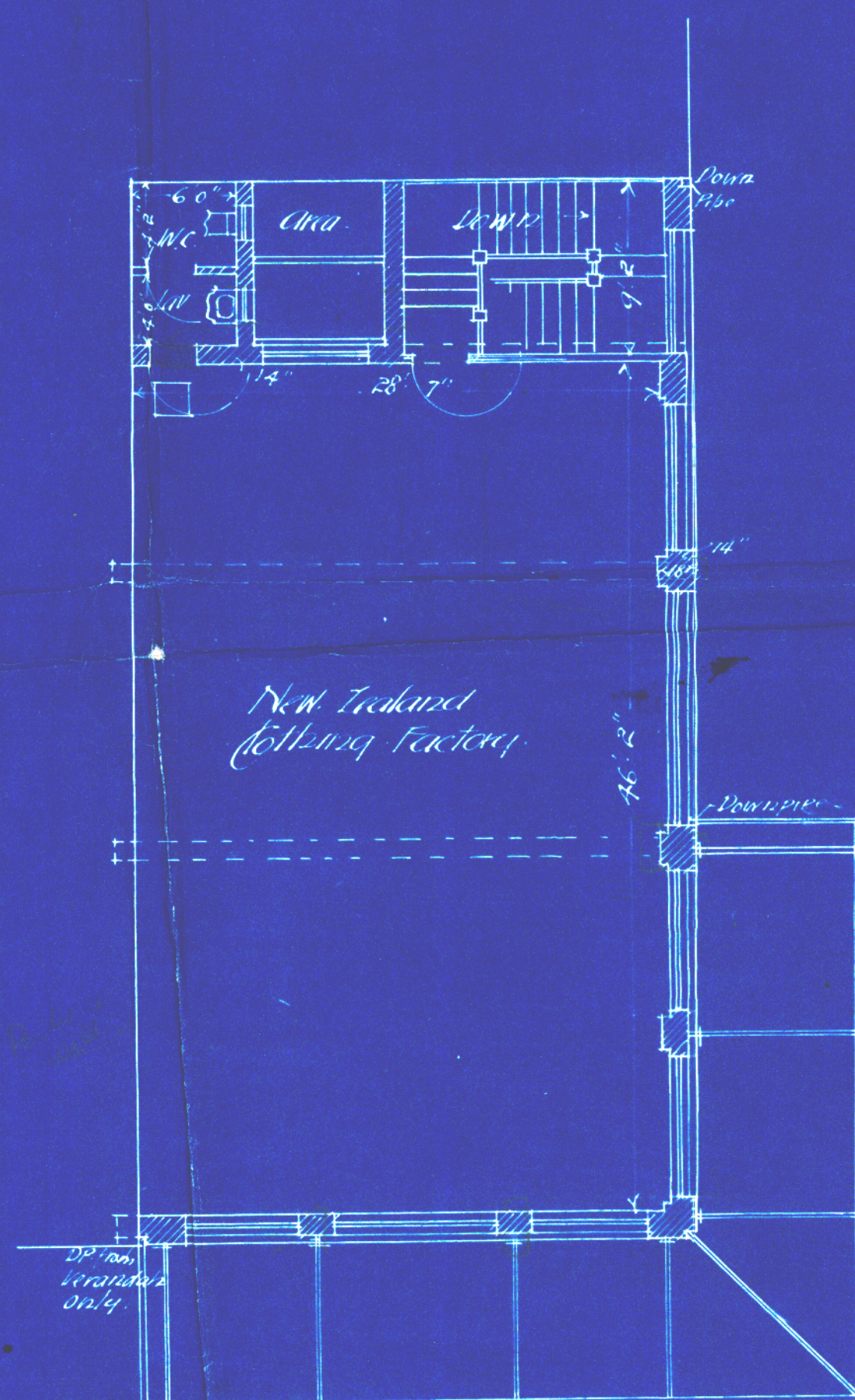
*Elevation to Gloucester St.*



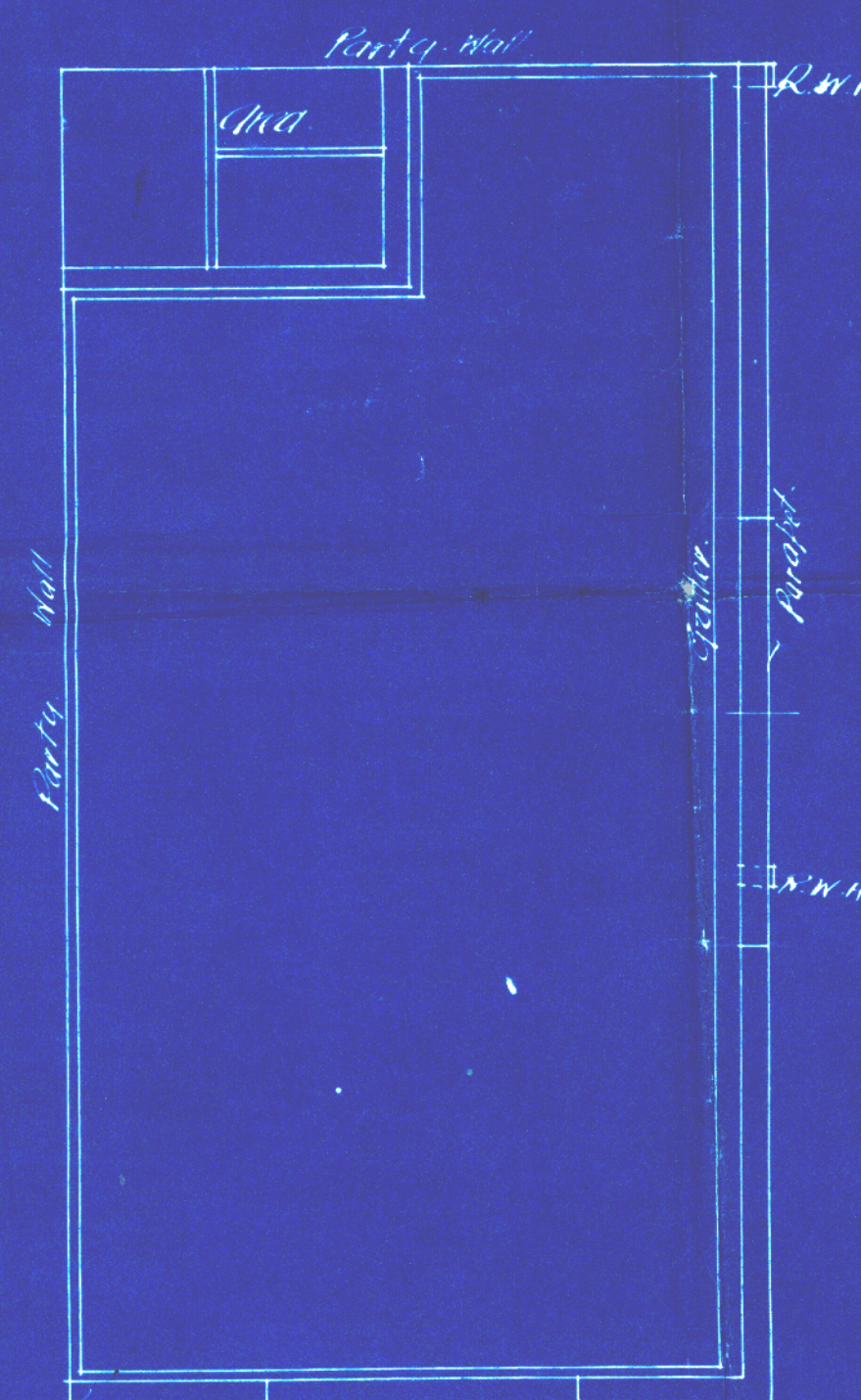
*Section C-D*



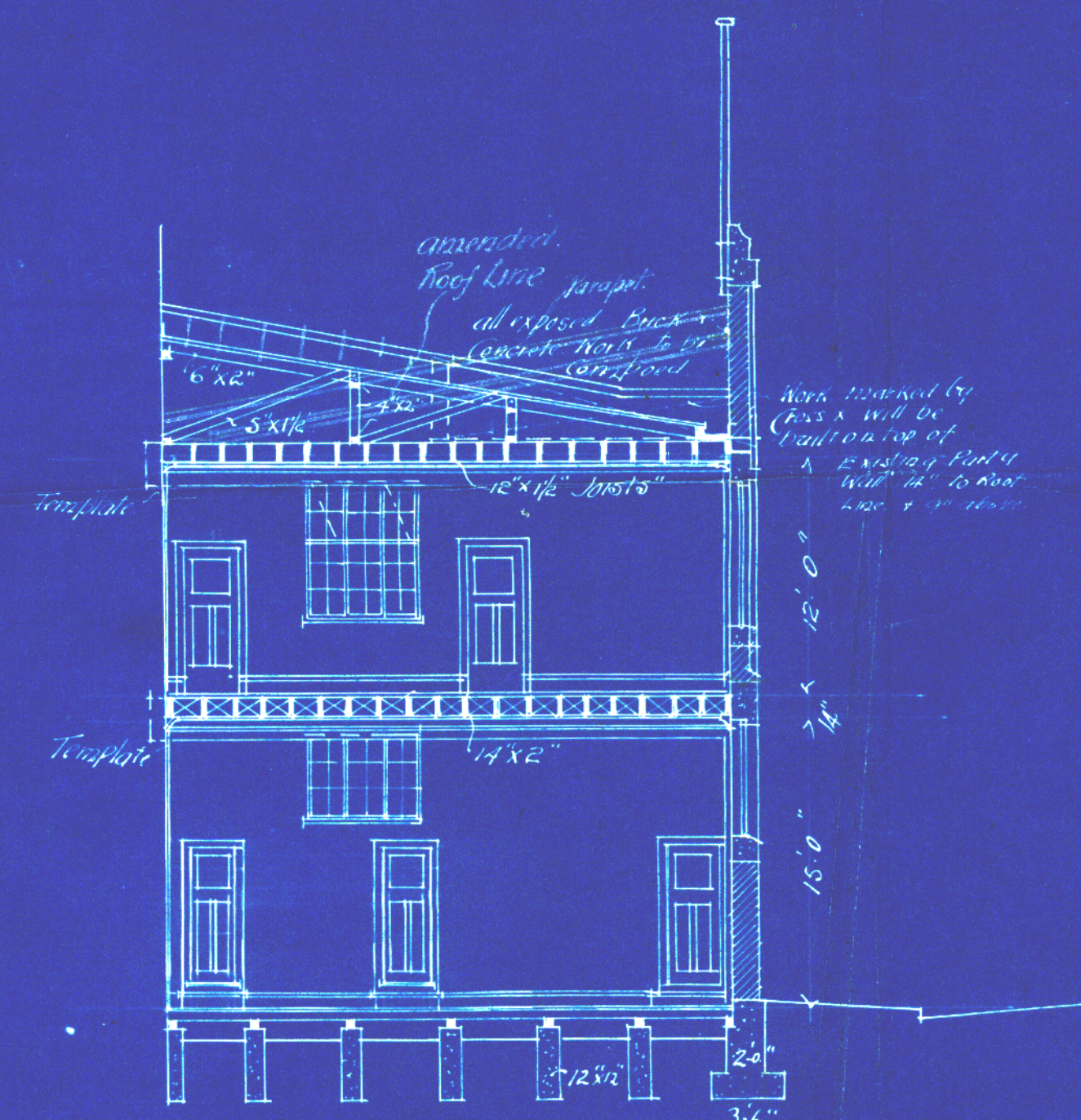
*Ground Plan*



*First Floor Plan*



*Roof Plan*

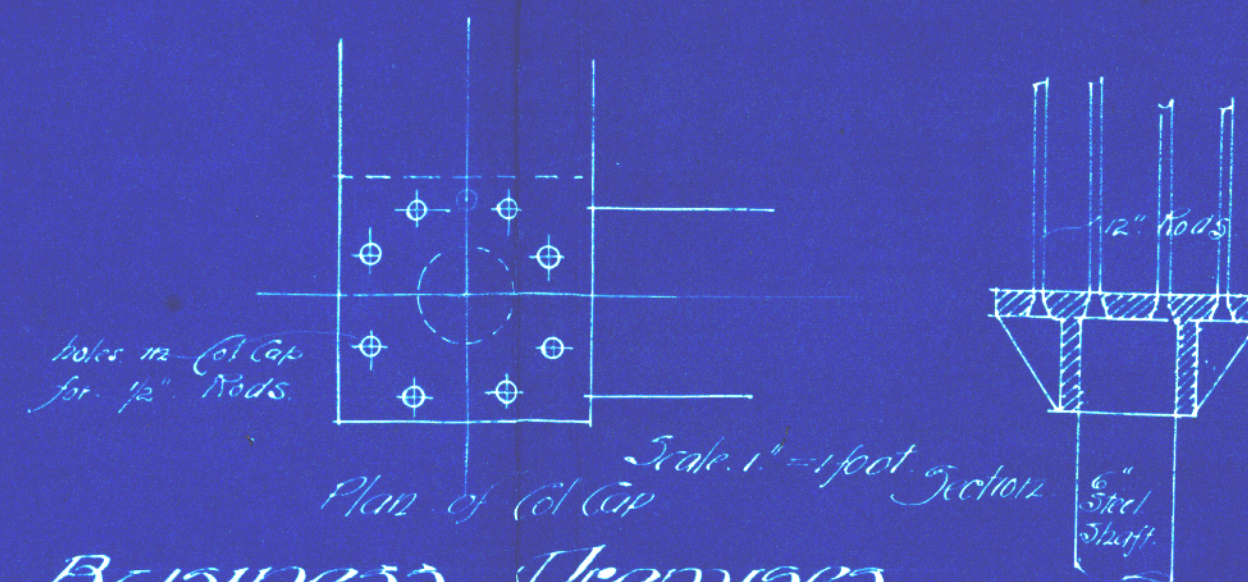
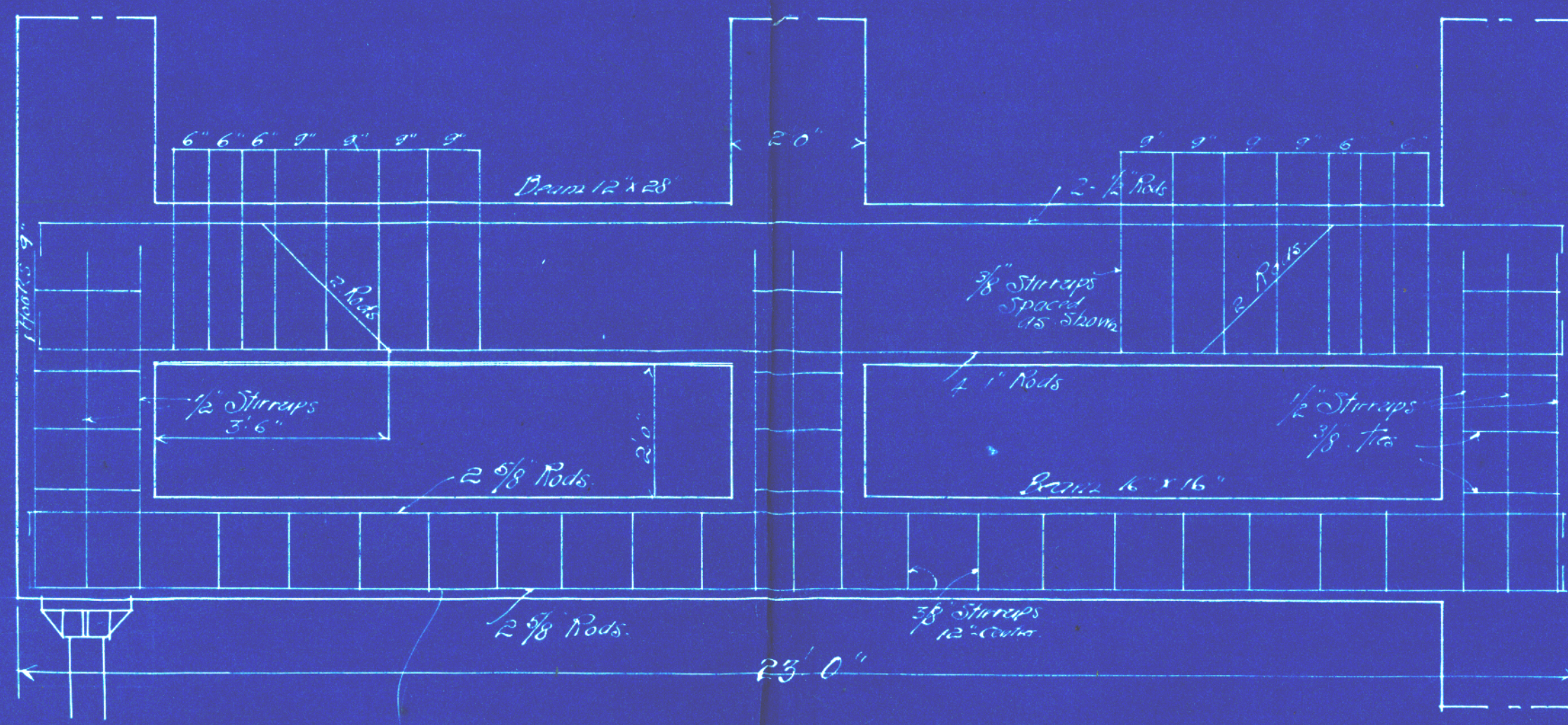
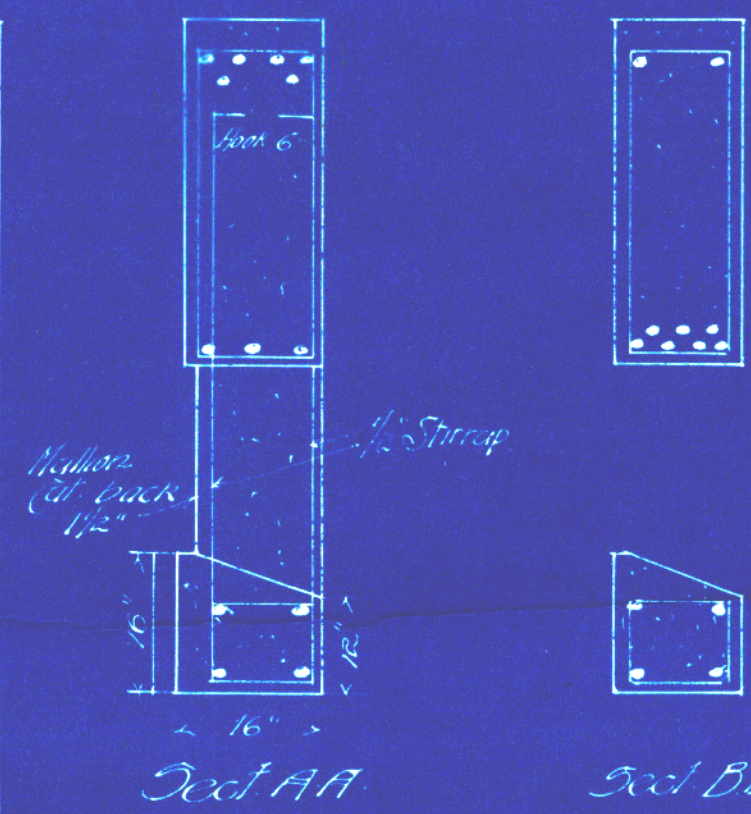
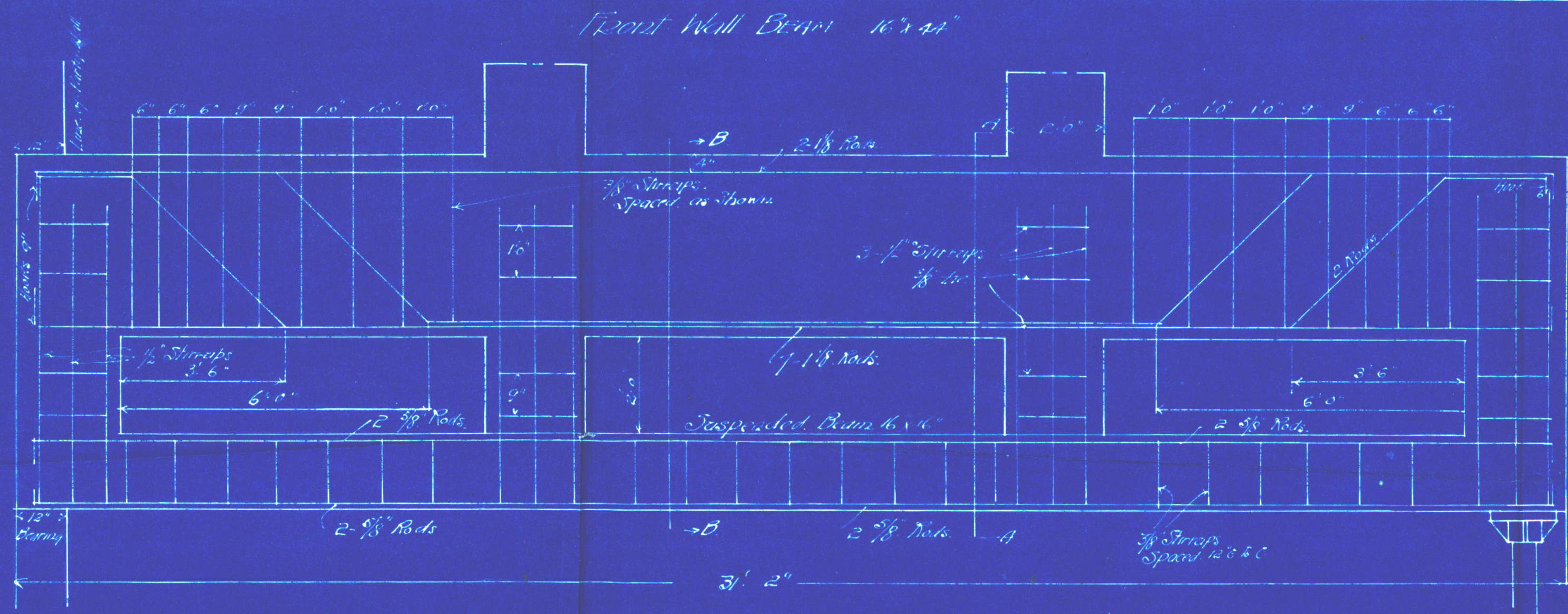


*Section A-B*

*The Fletcher Construction Co. Ltd.  
Cable St. Wellington  
E. R. Wells A.N.Z.I.A. Architect*

*Detail to be  
furnished for the  
C. R. I. C. Co.  
E. R. Wells*

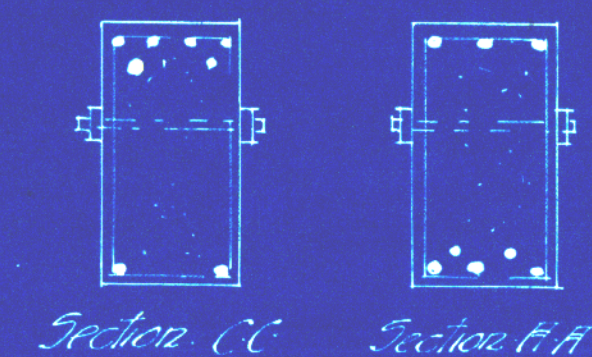
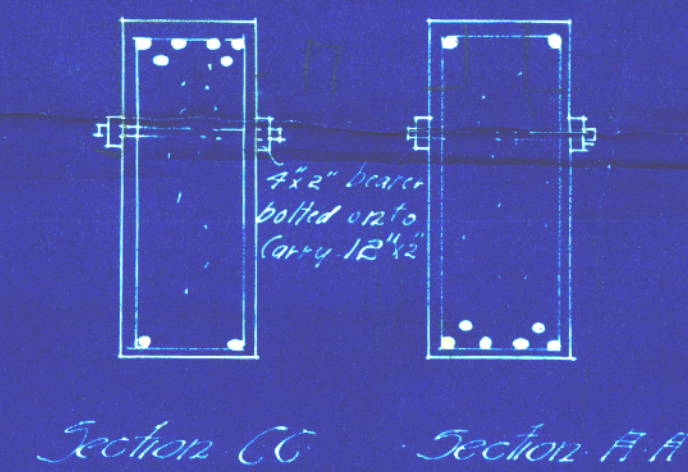
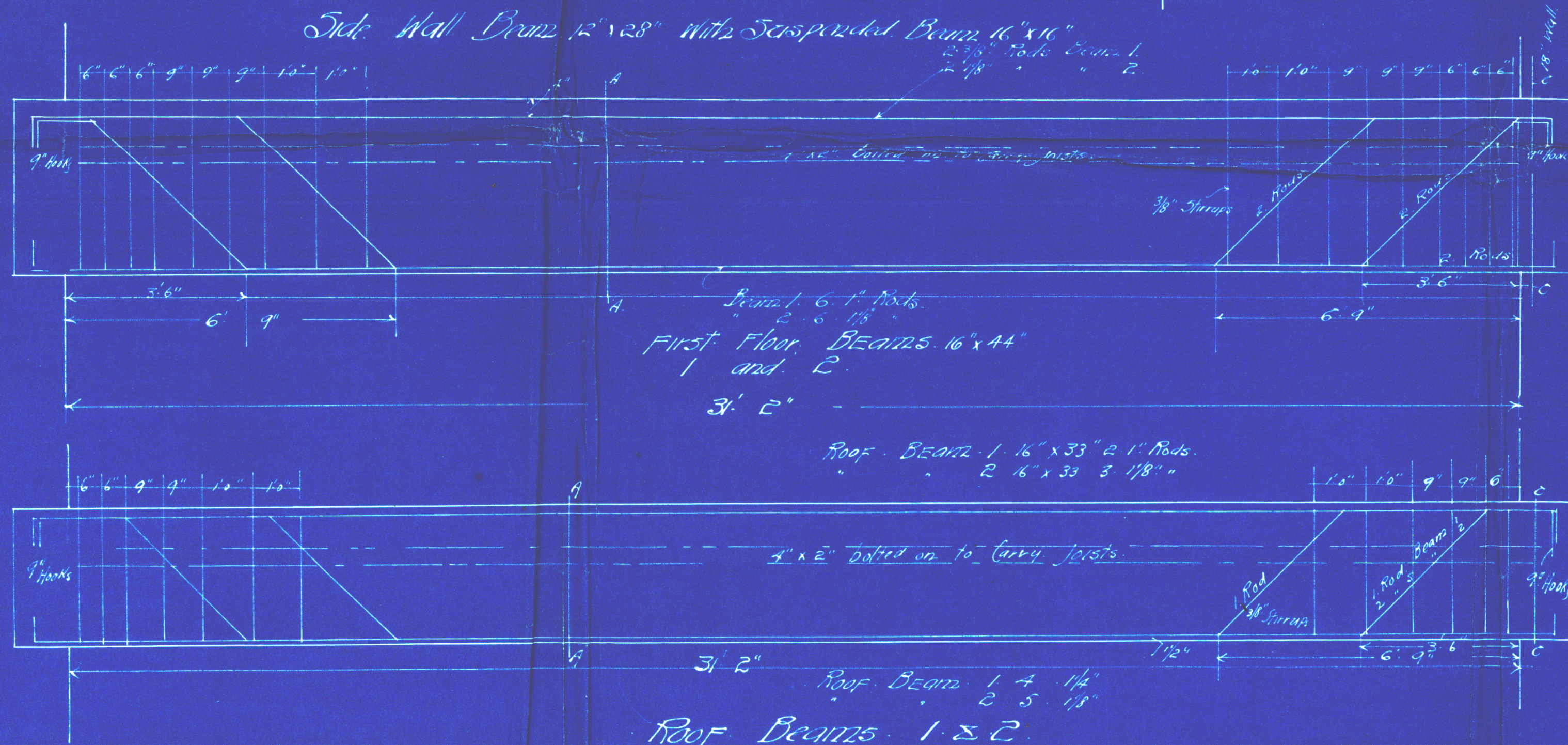




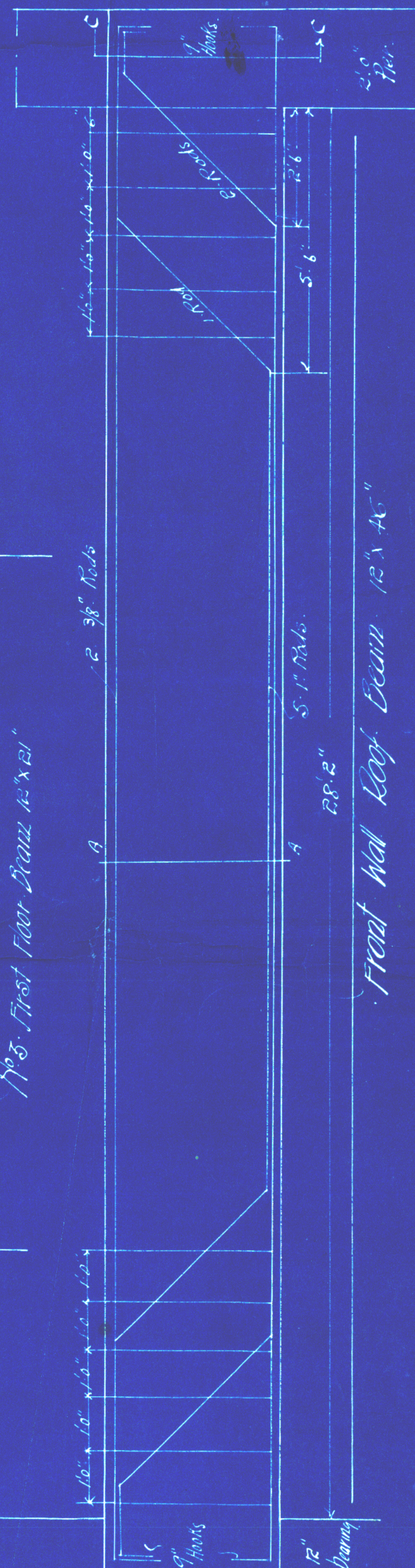
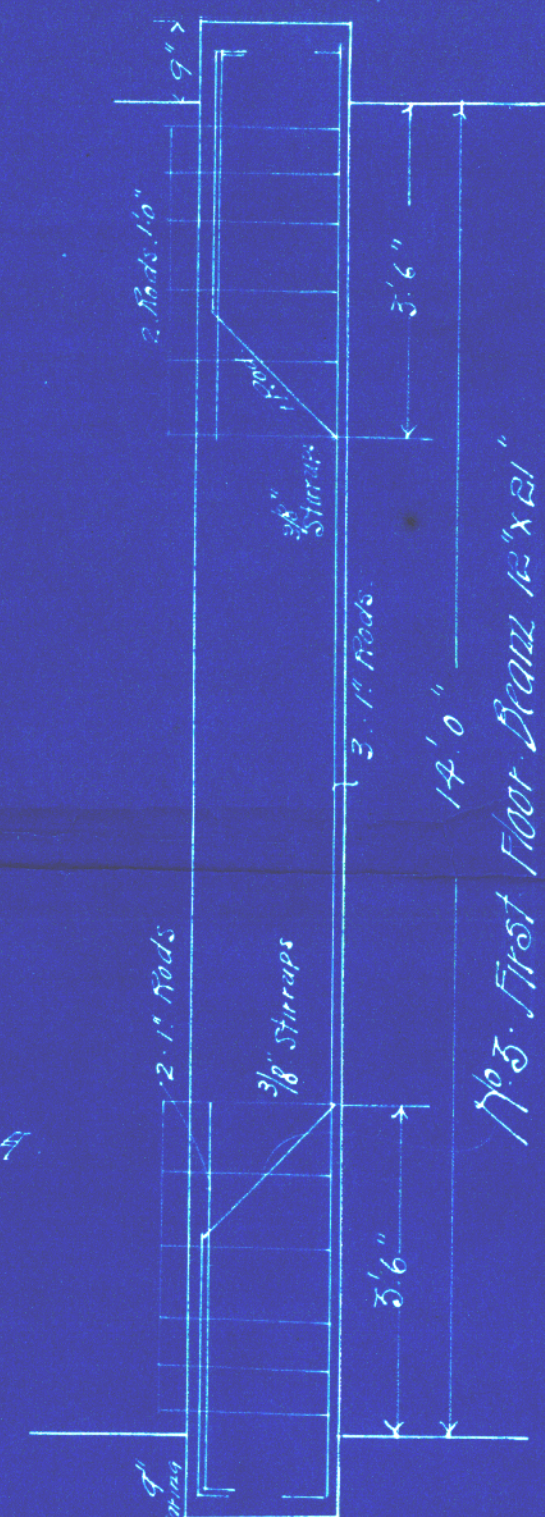
# BUSINESS PREMISES Caba St for H C Phillips Esq

Reinforced Concrete Details

Scale 1/2"=1-foot

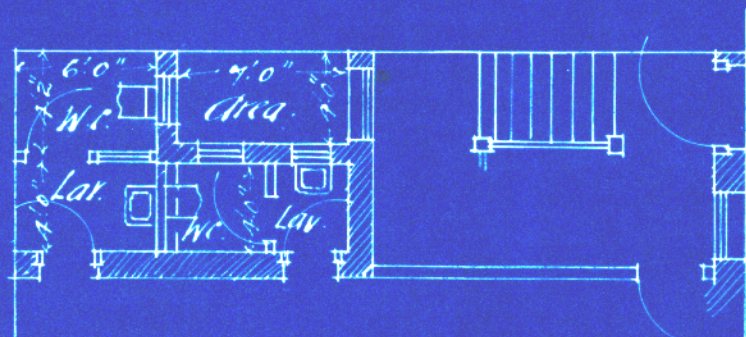


The Fletcher Construction Co Inc  
Civil Engrs

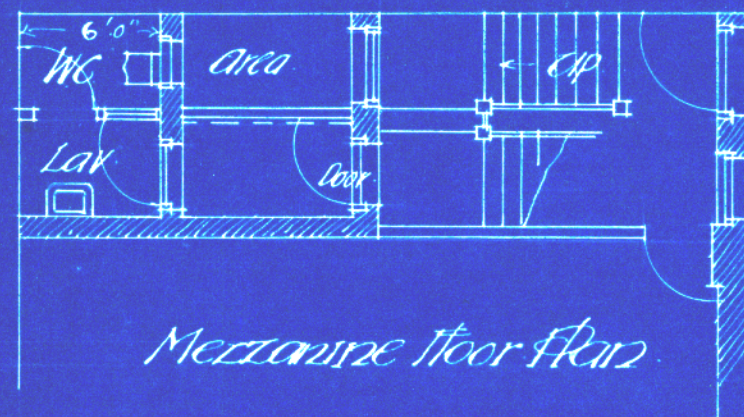




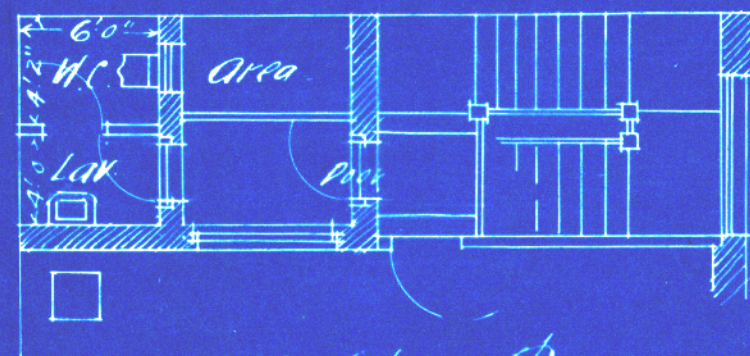
*Amended Plan of  
Lavatories  
Business Premises  
H. C. Phillips Esq.*



*Ground Floor Plan*



*Mezzanine Floor Plan*



*First Floor Plan*

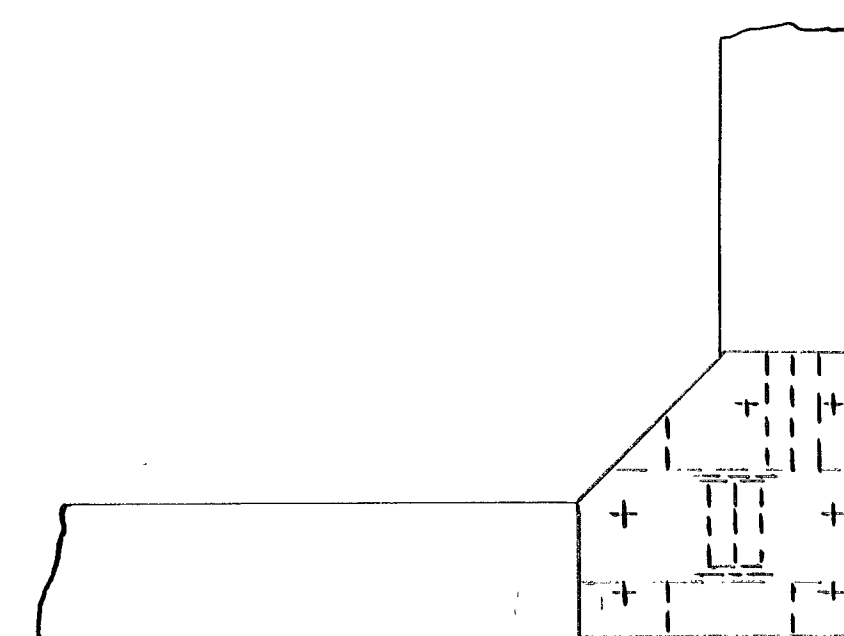
*Scale 1/4" = 1 foot*

*The Fletcher Construction Co. Ltd.*



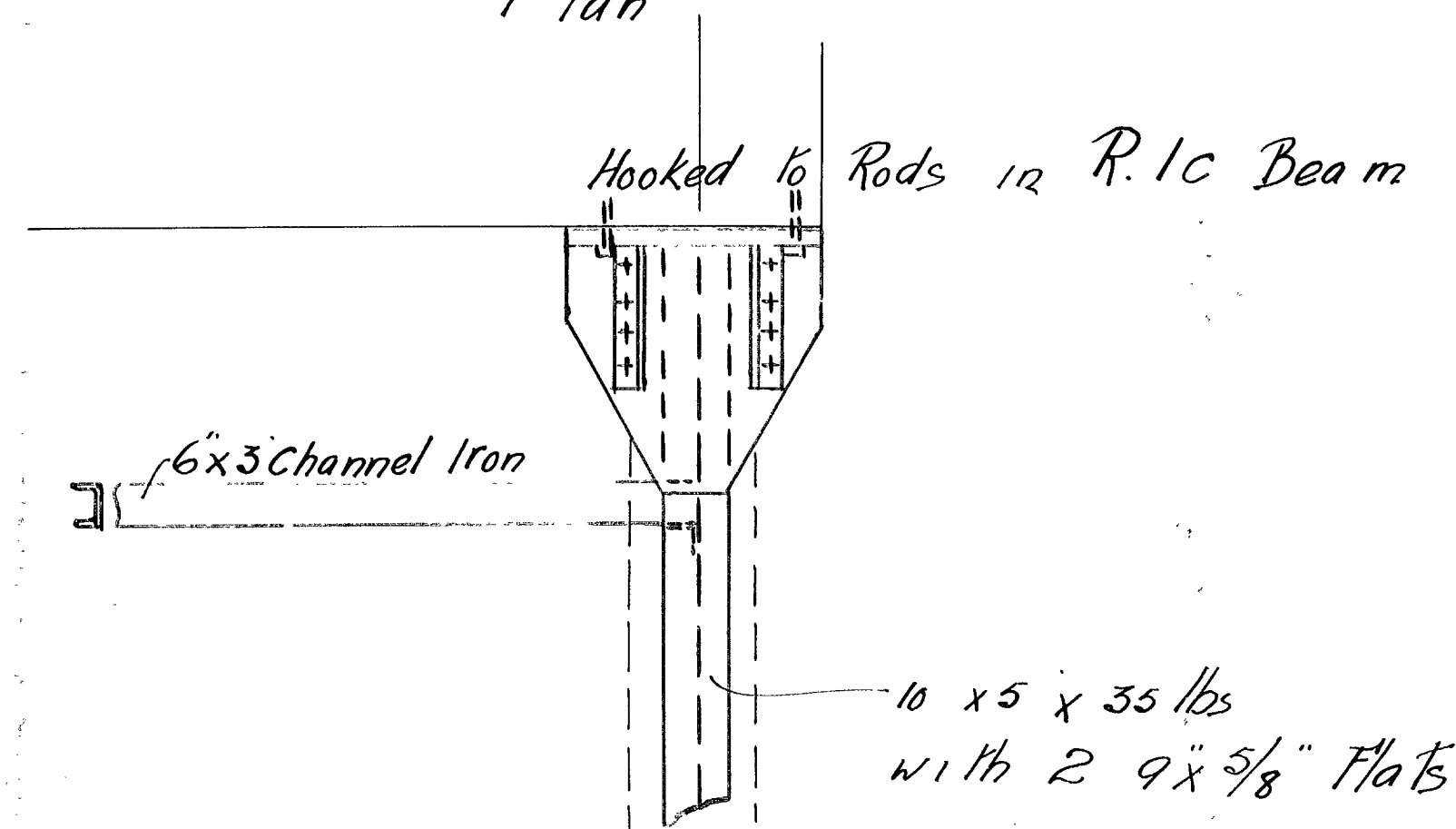
DETAILS FOUNDATION FOR OTANCHION  
BUSINESS PREMISES CUBA ST  
FOR H.C. PHILLIPS ESQ.

SCALE  $\frac{1}{2}" = 1 \text{ FOOT}$



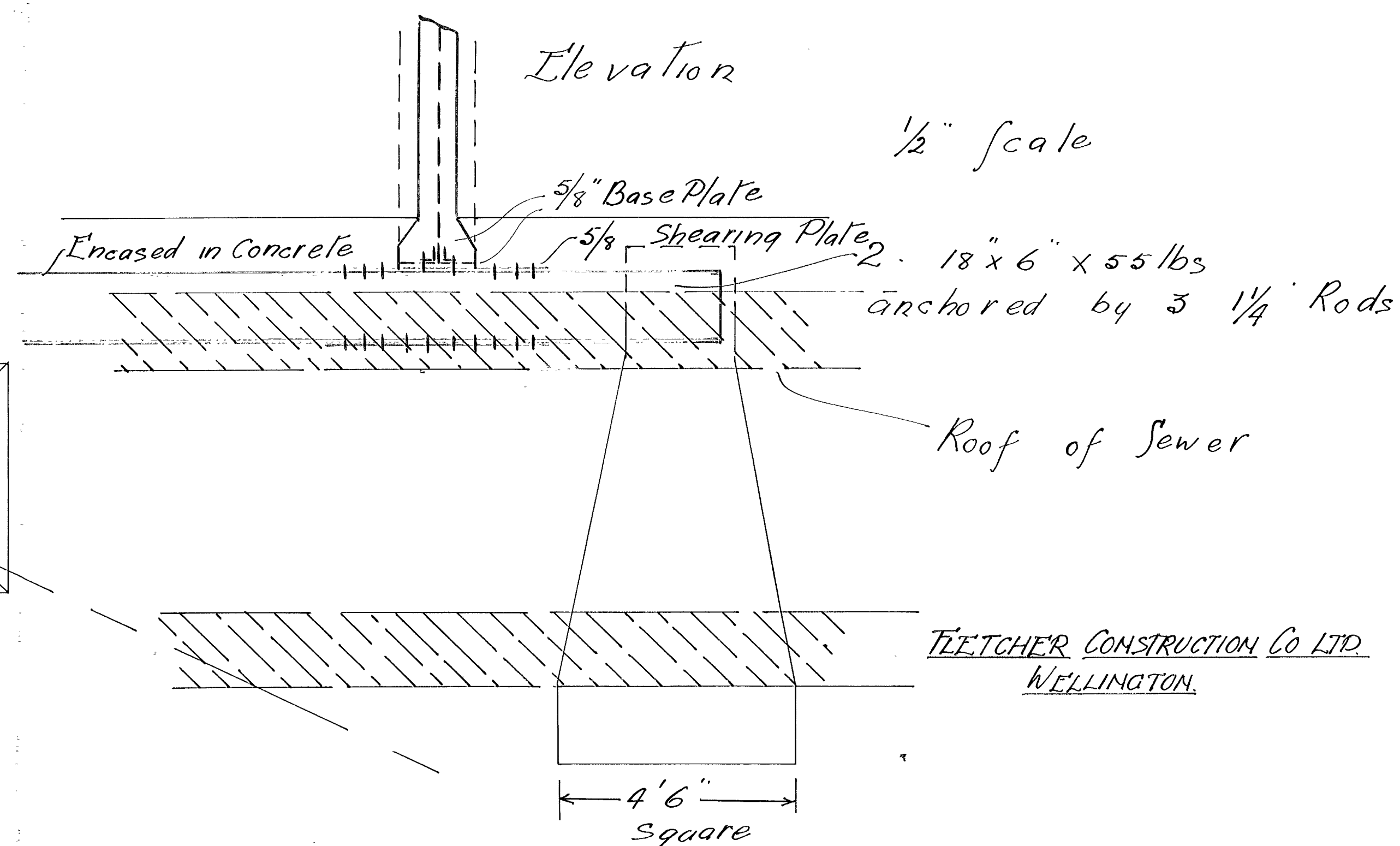
Line of R.I.C. Beam

Plan

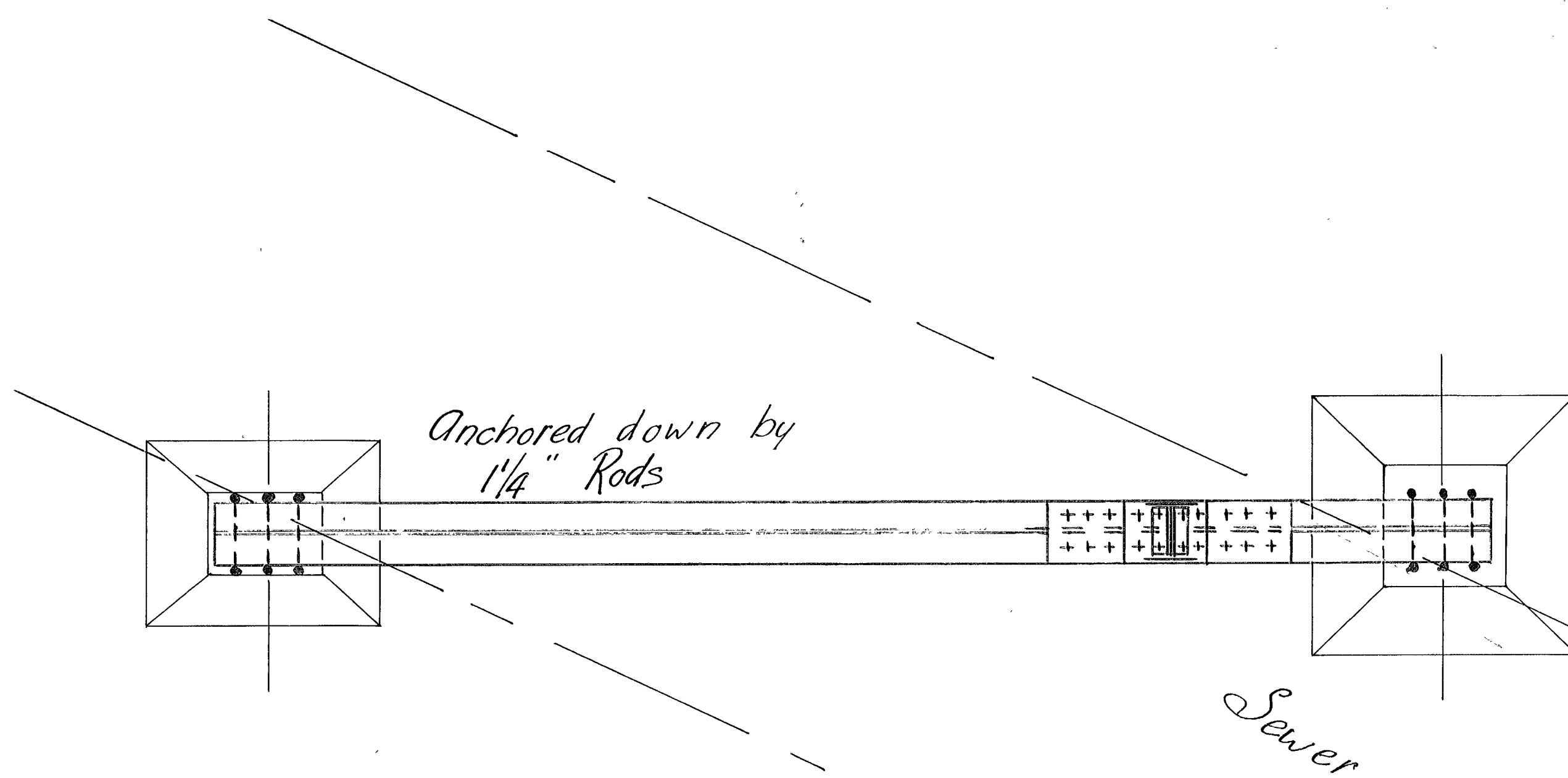


Elevation

$\frac{1}{2}"$  scale



FLETCHER CONSTRUCTION CO LTD  
 WELLINGTON

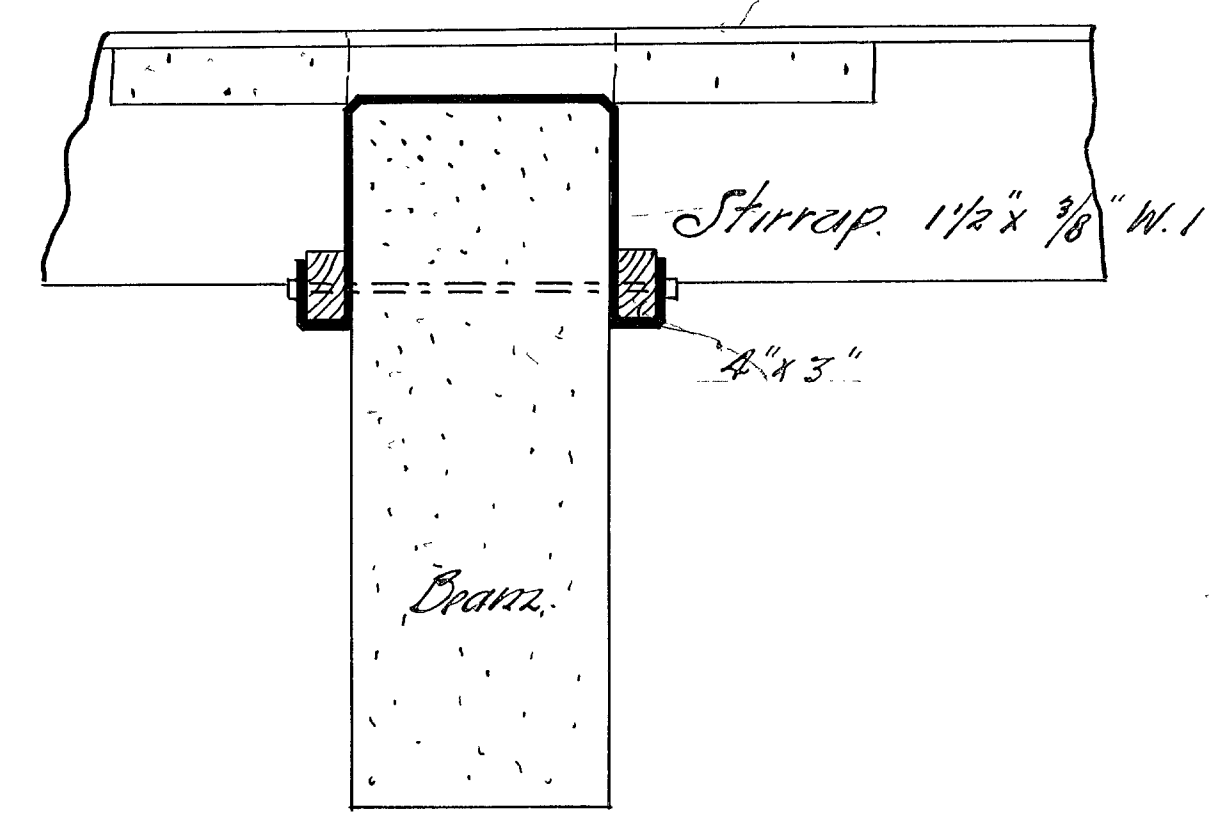


Anchored down by  
 $1\frac{1}{4}"$  Rods

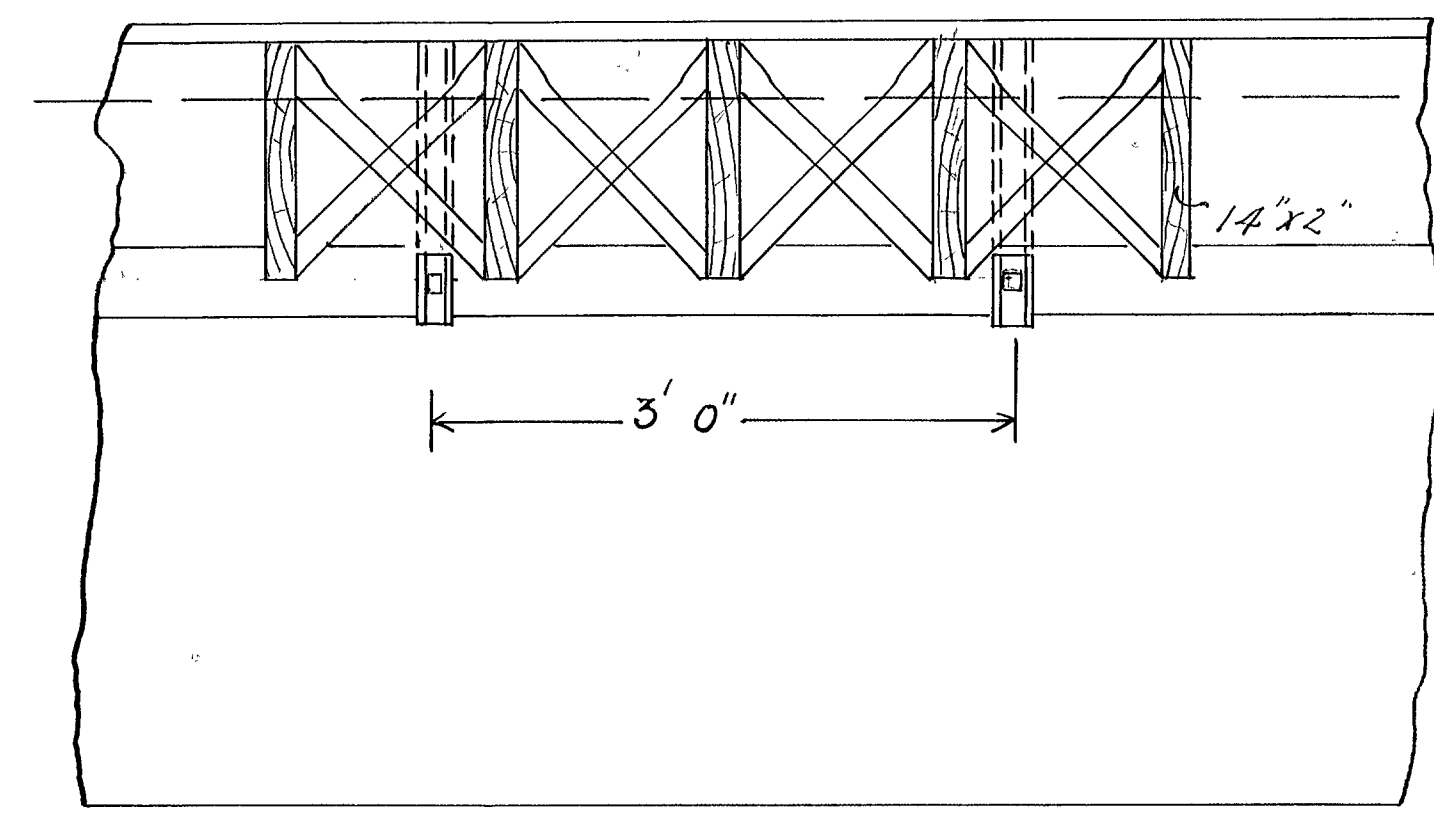
Sewer



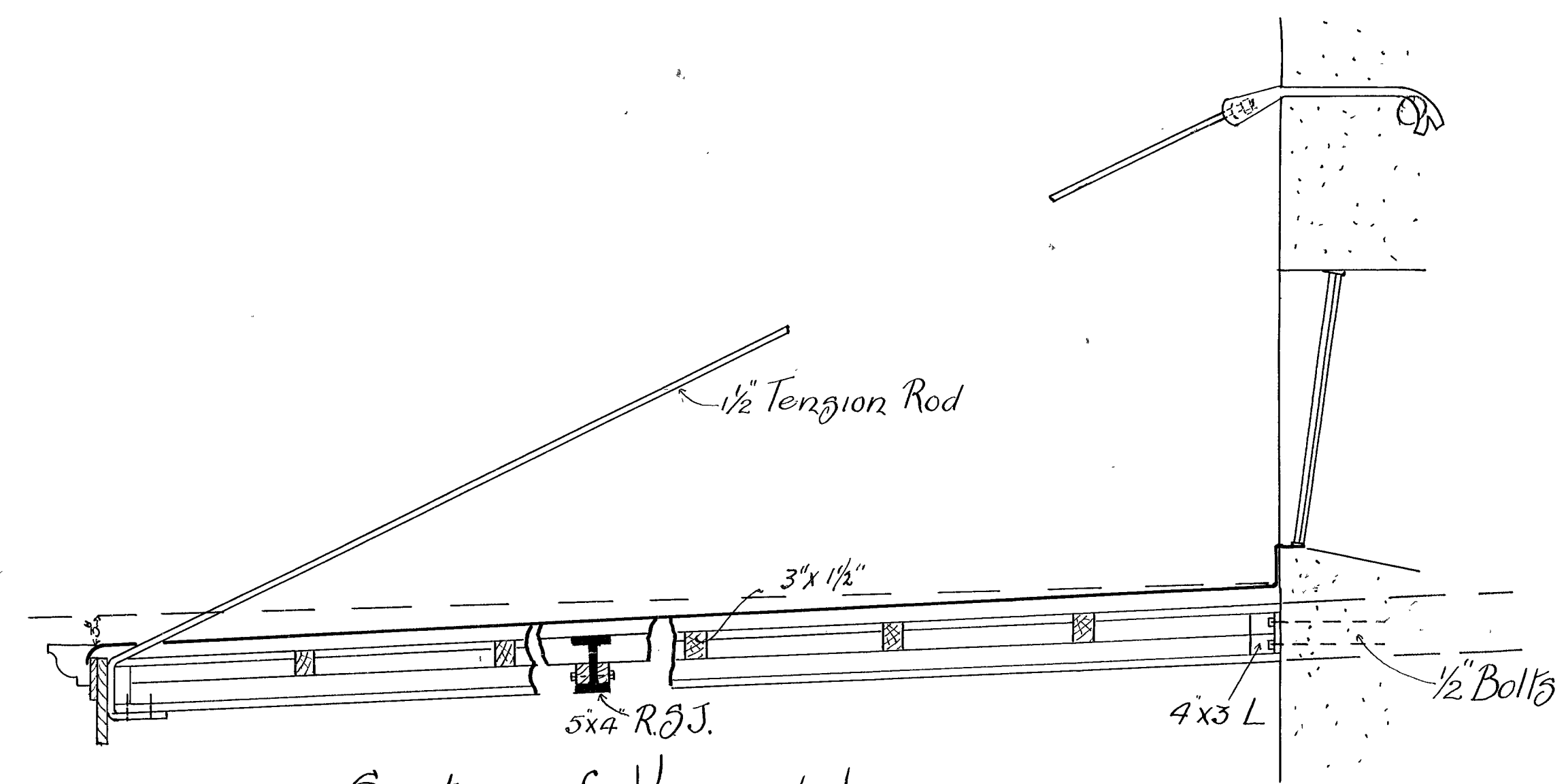
Constructional Details  
Business Premises Cuba St  
for H.C. Phillips Esq



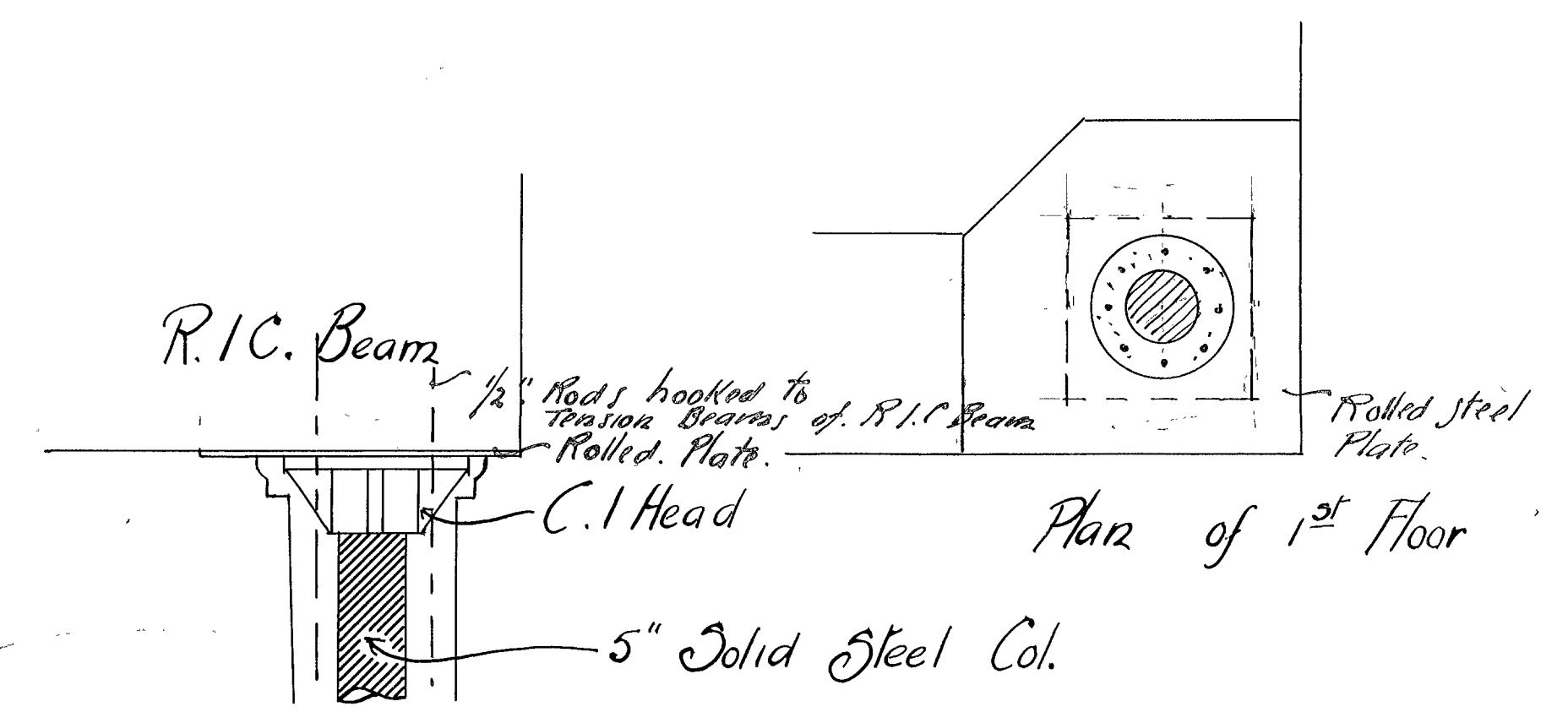
Section



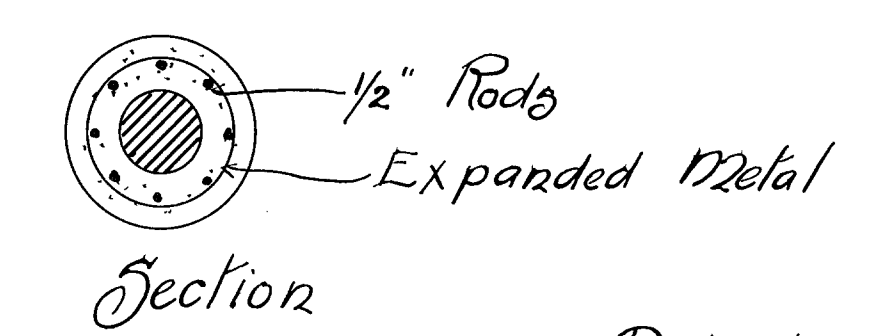
Elevation



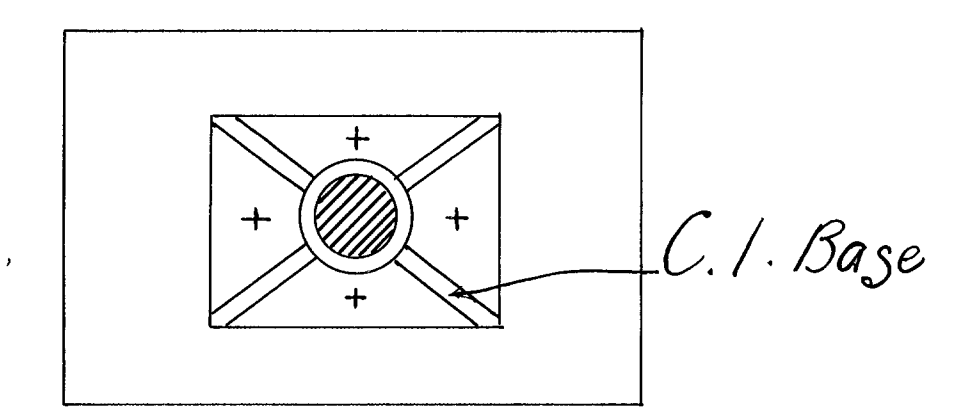
Section of Verandah



Plan of 1st Floor



Details of Steel Column



Plan 3'-0

Scale 1" = 1 foot.